

Mobile client Manual to install and use

1、 DVR-side setting

Access to the main menu -> Network Settings> Network services, double-click the cell phone monitor> enabled tick / OK

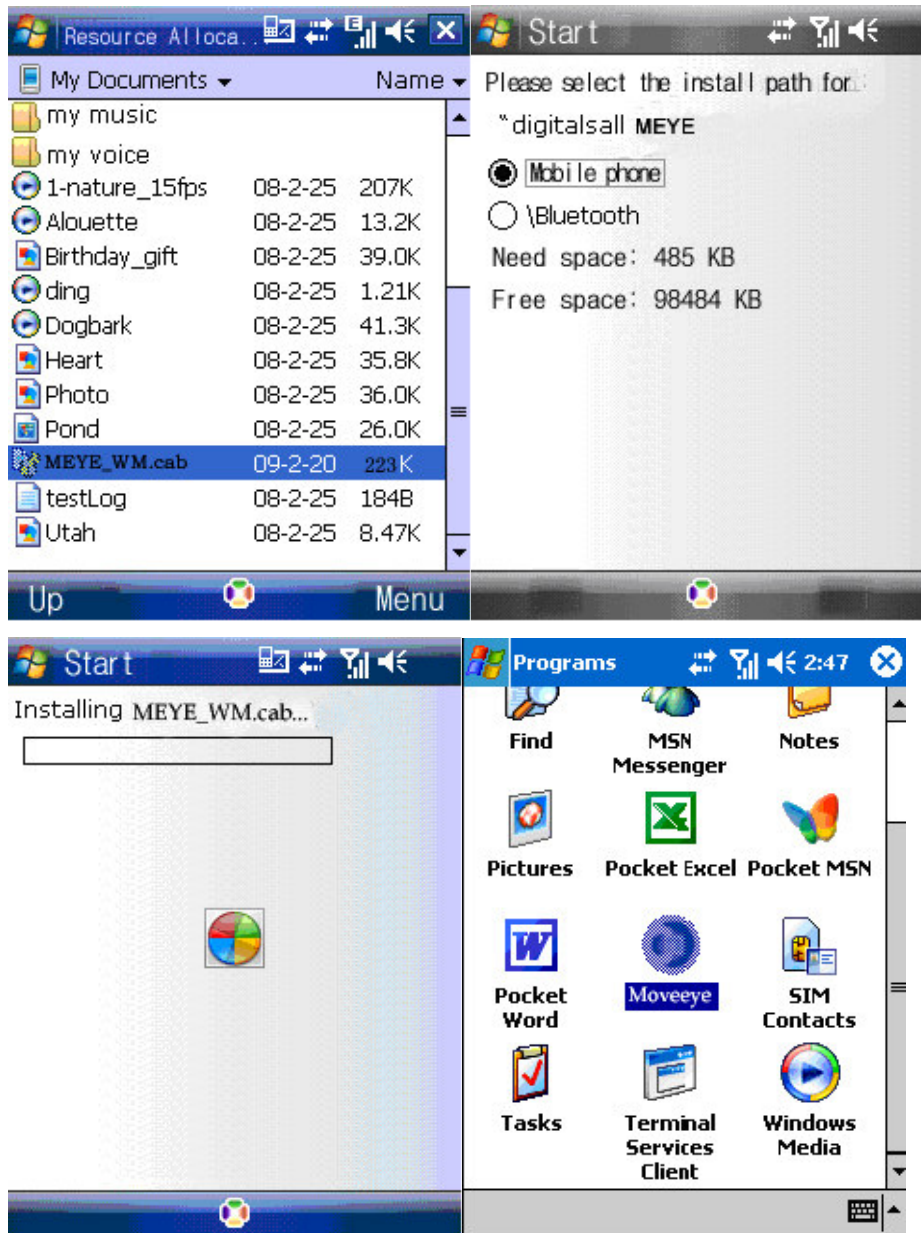
Into the router, 34599 map to DVR's IP address / Save

2、 Mobile setting

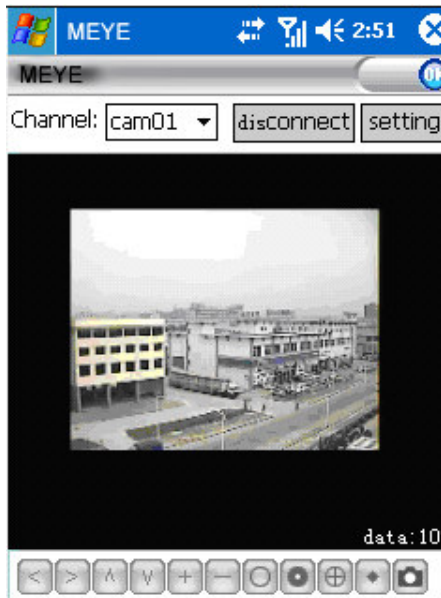
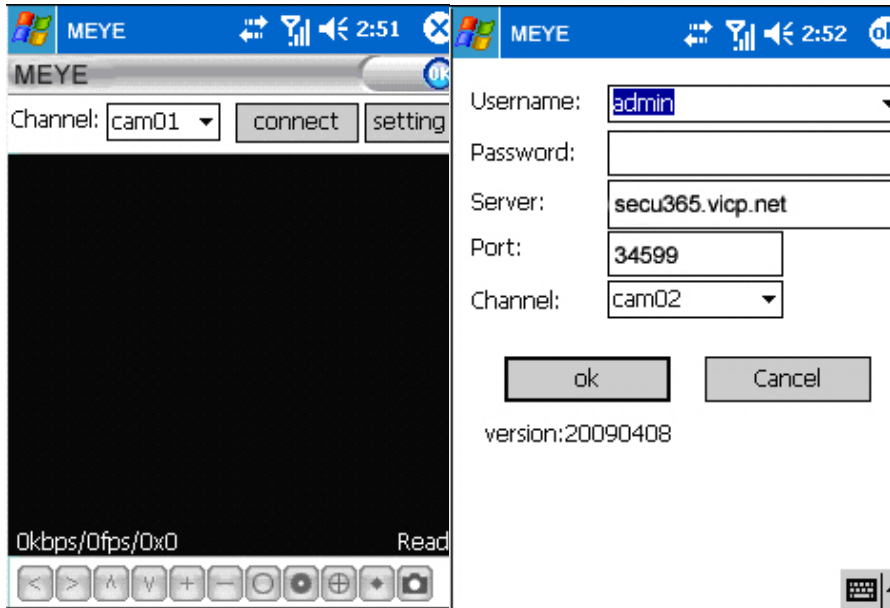
2.1 Windows Mobile operating system

1) Software Installation

Connect the data cable, copy CDs, or downloaded to the MEYE_WM.cab to your phone, select the software installation.

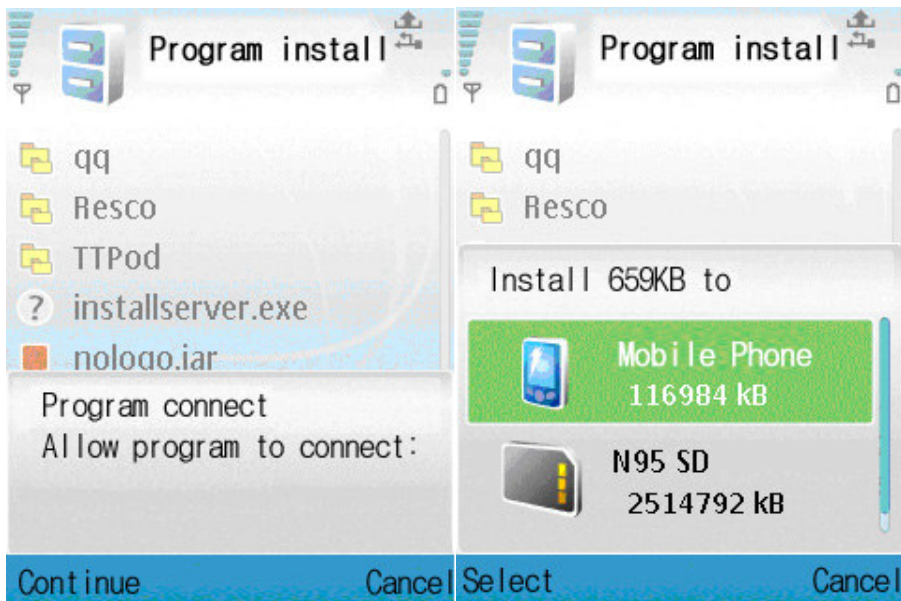
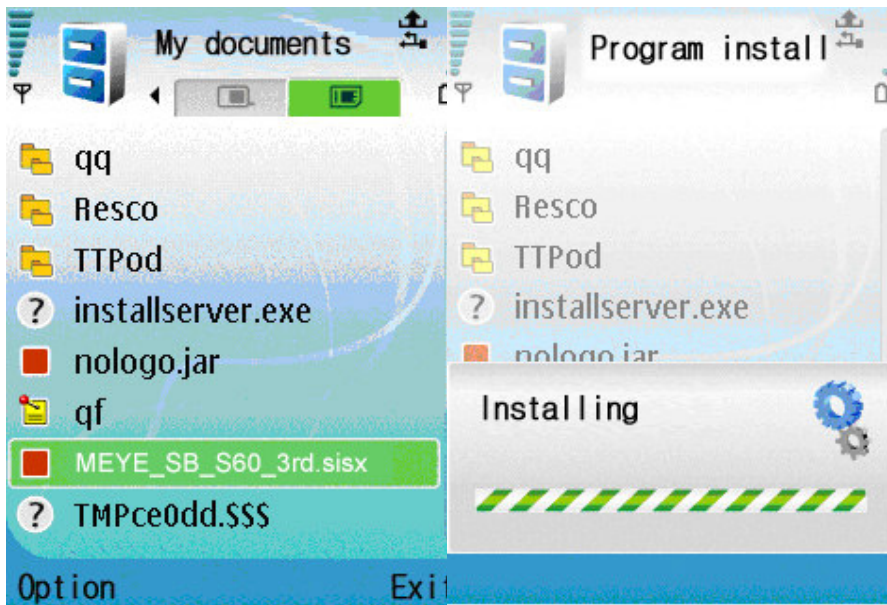


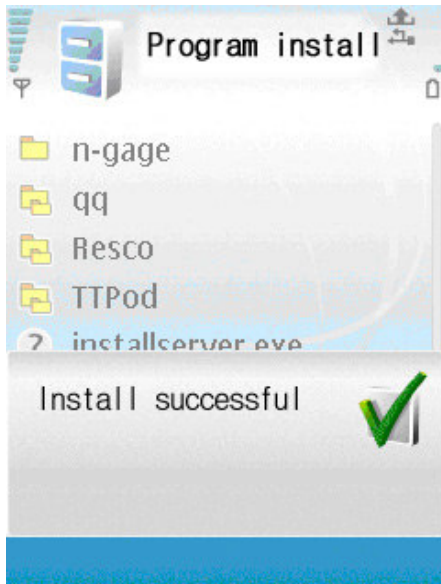
2) Open the software, set up the server.



2.2 Symbian operating system

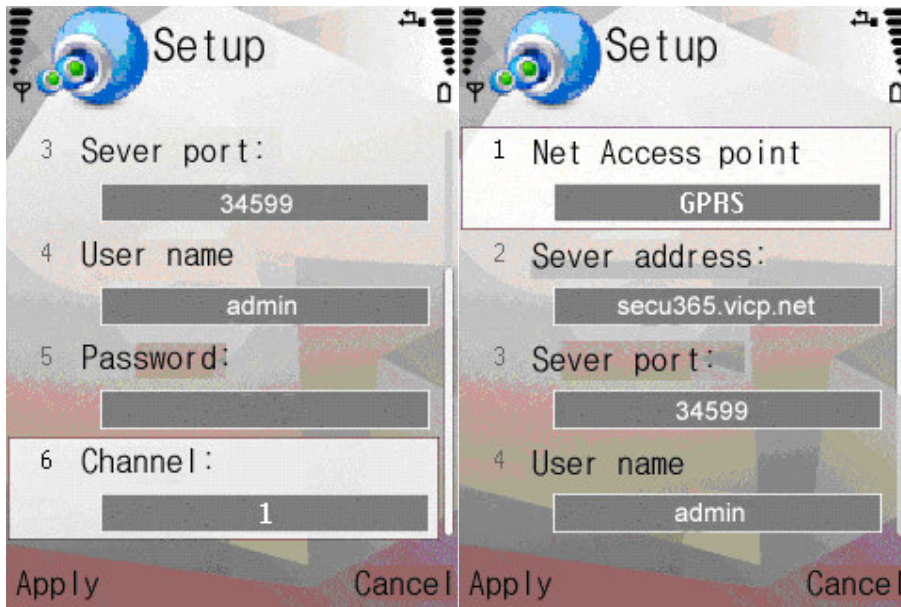
1) Symbian operating system, namely, Symbian S60 V3, Symbian S60 V5. They correspond to different mobile phone, please select the correct copy of the client to the phone memory card, and then select the software, click the installation (the following screenshots for Symbian S60 V3, for example, to install the same way as the other.)





2) Into the software, set up the server.





Note: In case of software can not install, change the menu - Tools - Open Program Manager, click the left button, select "Settings", change "software installation: Only registered procedure" to "Software Installation: All" " Online certificate check: off "

2.3 Android Operating System

1) installation

1. Loading SD card, the installation file MEYE-Android.apk copied to SD card.

2. Close USB, enter the phone **【setting】** - **【Application】** - **【APK installer】** , you can find the installation file, click on the installation



2) Software runs

MEYE mobile terminal including: video watch, switch channel, full-screen zoom, PTZ control, focus, mobile capture, collection and exit functions.

After installation, click the application named "MEYE" icon to run



3) Software settings

If the first parameter to use or need to change, click 【setting】 button to enter the parameter setting.



Collection:

Save the record, where you can find;

User Name:

DVR on the **【Mobile Monitor】** to set the user's name;

Password:

DVR on the **【Mobile Monitor】** to set user passwords;

Server:

DVR's public network IP address or dynamic domain name;

Port:

DVR on the **【Mobile Monitor】** to set the server port;

Number of channels:

Set the channel number;

Default channel:

Set the default to conduct video surveillance of the DVR video channel;

Record Name:

Record-keeping of the name;

① settings are correct and click **【Save】** , then the clause is added to the collection in record. Next collection in the direct selection of the records can be, do not need to re-set.


Set the correct settings and click **【setting】** to return to the top main interface.

After setting a good save in the main interface, simply click the "Connect" button, you can connect to the server. This interface can be done in the switch channel, full-screen zoom, PTZ control, focus, mobile capture, full screen and other operations

2.4 iPhone operating system

1); Installation

1. In the iPhone, open the "App Store" shown in Figure 1;

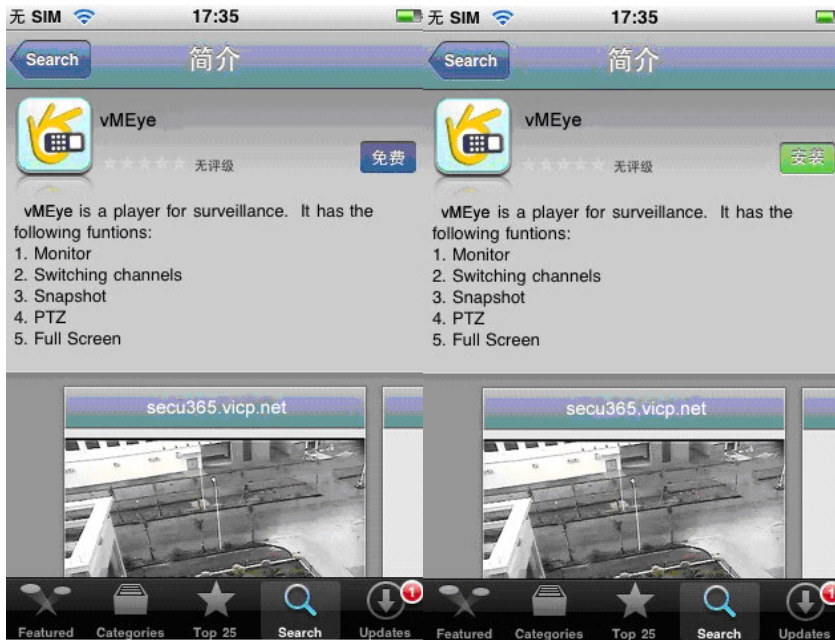
2. Click on the  "Search" after, in the search bar enter "vMEye", click on "Search" as shown in Figure 2; 3. Shown in Figure 3 shows ;

4. Click to Figure 3 in the "free", the display shown in Figure 4, click on the Figure 4 in the "Installation", appears in the screen shown in Figure 5, in Figure 5, enter your Apple account password then "Good", the screen appears as shown in Figure 6;



1

2



3

4



5



6

5 . , Figure 6 "正在等待..." display to "正在载入..." that, vMEye software is automatically downloaded and installed, etc. "正在安装..." The progress bar shows " " full, then the installation was successful,

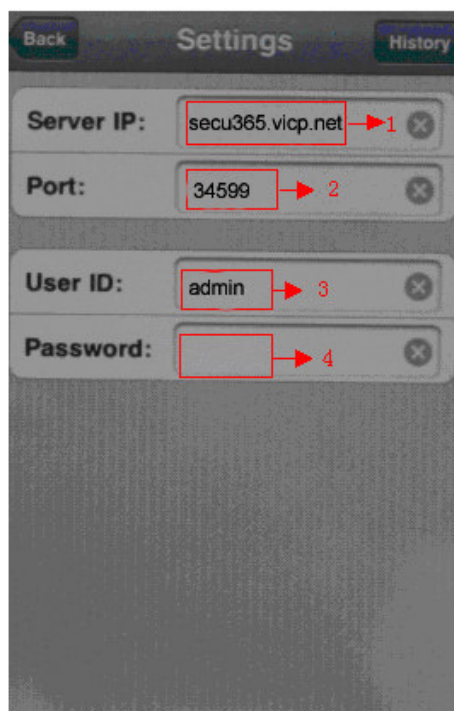
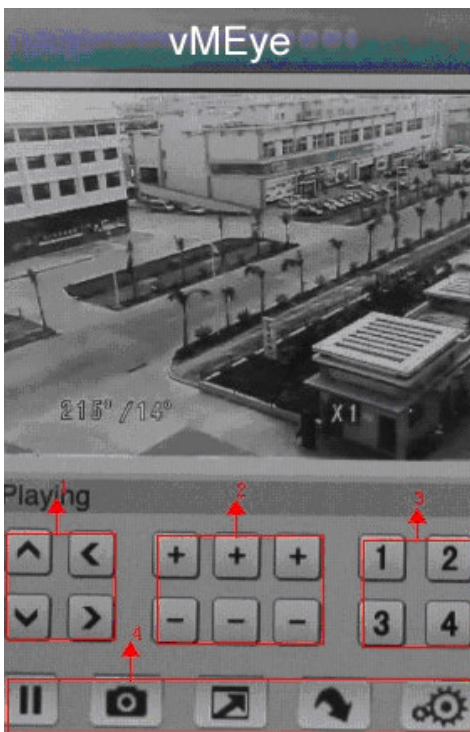
6 . Installation is complete, the phone interface display vMEye icon shown in Figure 7:



7

2): Software

1, Click vMEye icon, open the software. First, set the correct server address and port, and then click the play button to play. Interface, function keys are described below



- PTZ direction control key (on the lower left and right)
- PTZ camera control (zoom + region, regional narrow -), (increase + focus, focus decreases -), (aperture large +, aperture reduced- _).
- monitor the channel selection.
- button functions from left to right: Pause, snapshot, full screen mode, choose the next set of monitoring and control connection settings.
- out, the middle button phone

Notes:

Common problems and solutions

1: The connection is not on the server?

a: check the settings page, servers, port, user name, password is set correctly.

b: Check the network, view the phone is connected to the external network.

2: enter the main interface, you can not operate head?

a: to check whether the channel head.

b: head to respond to slow, need to wait about.

3: your phone can support, which software should be installed?

a: view the phone manual or online query the operating system name of the phone model.

b: View more than 4 operating system is not a smartphone, and if so, select the appropriate software installed. If not, was not supported mobile phone.

4: iphone client software installed, click the Play button, why is there a testing and evaluation versions of the tips?

a: After installing the software, you must first follow the steps to set the correct server address, ports and other information, then click play, if the point of playing directly connected to the company's test equipment. Because the company's test equipment is only allowed to connect test two days, so the above tips. Ignore the message, set the correct server address and other information, then click on play, that will display properly.

Mobile Viewing On Your BlackBerry

BlackBerry Setting Steps :

- 1) System requirements
Smartphone OS: 5.0
Support Models:
CURVE 8900
BOLD 9700
TOUR 9630

- 2) Installation

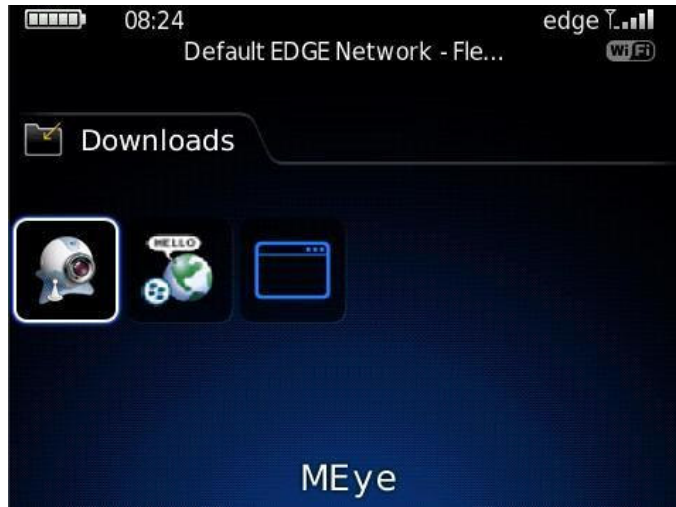
Setup file name: MEye.cod , MEye.alx

- a) Using BlackBerry Desktop Manager to setup
Connect the BlackBerry to PC via USB Cable
Run Desktop Manager->Application Loader->Add/delete application->Select the folder in dialog box->Select MEye.alx-> Run it in your phone



- b) Using Cod loader to setup
Connect the BlackBerry to PC via USB Cable
Cod Loader and in-phase phone. After that, add cod, install select application, run it.

- 3) Remove USB Cable, you will see the MEye Icon in desktop->Download



4) Run software, GUI as below



5) Please do some setting before you begin use it, click Setting-> do parameter setting

Setting

Server info

Name :doc4gz

Address: doc4gz.gnway.net

Port: 9191

User info

User ID: admin

Password: *****

Network info

NetworkType WIFI

save cancel history

Server Address:

DVR public IP address or DDNS

Server Port:

The same number with DVR server port

User ID:

Same as IE user name

Password:

Same as IE password

Network Type:

Select network mode, WIFI or 3G

6) Video display mode

You can switch the general model and full-screen mode





Full-screen mode

7) Keyboard shortcut

PTZ control

“Q” →up

“A” →down

“W” →left

“S” →right

“E” →add focus

“D” →reduce focus

“R” →add zoom

“F” →reduce zoom

“T” →add circle

“G” →reduce circle

“space” →capture;