

wanscam

Wireless/Wired Network IP Camera

Night Vision & Remote Operation

User Manual

Thank you for buying our IP camera.

Wanscam AJ Series IP Camera products are designed and equipped for local and remote network video surveillance system, including wired IP bullet camera, wireless IP bullet camera, IP IR dome camera, IP IR waterproof camera, IP Pan/Tilt/Zoom Camera etc. We adopt high performance chip to ensure high quality media processor which processes audio and video collection, compression and transmission. Standard M-JPEG compression format ensures clear and streaming video performance. It enables users to view live video via IE6.0, IE7.0, IE8.0, Firefox, Google browser or other standard browser.

Wanscam AJ series IP Camera products are applicable for big, medium-sized and small enterprises, chain store, factory, home and all kinds of spots where remote network video transmission and control supposed to be installed, they are easy to be installed and operated. Before the installation of the IP camera, please check if your product accessories in the package are complete

Product Components

IP Camera -----	1 PCS
Bracket (optional) -----	1 PCS
Power Supply- -----	1 PCS
Warranty Card-----	1 PCS
Certificate of Quality-----	1 PCS
CD-----	1 PCS

Table of CONTENTS

1. Introduction	4
1.1. Safety Introduction	5
1.2. Product Specifications.....	5
1.3. Applications.....	5
1.4. System Requirements.....	6
2. Products Panels and Controls	6
2.1. Main Interface Introduction of AJ Series Products.....	7
3. Installation	8
3.1. Connecting you camera to your local network	8
3.2. Connecting Your Camera To Your Local Network-Continued.....	10
4. Prompting the necessary ActiveX controls.....	12
4.1 Prompting the necessary ActiveX controls-continued.....	13
5. Logging into your camera from a local internet location.....	13
6. Enabling wireless connection using a wireless router.....	14
7. Configuring the remote access.....	15
8. Main menu interface operation.....	17
8.1. Manager Operation.....	18
8.1.1. Basic Network Settings.....	19
8.1.2. Basic Network Settings.....	20
8.1.3. Wireless Setting.....	21
8.1.4. ADSL Setting.....	21
8.1.5. Dynamic DNS Setting (DDNS).....	21
8.1.6. E-mail and FTP service Settings.....	22
8.1.7. Alarm Service Settings.....	23
8.1.8. Reset/Firm Ware Upgrade	24
8.1.9. Restore Factory Settings	24
8.1.10. Reboot Equipment	24
9 Warranty	25

General Introduction

IP Camera is a new generation product with the combination of analog camera & IP video technology. Despite all functions which analog cameras have, IP camera can compress and encrypt video and audio signal then send it to remote terminals through internet with its built-in processor and web server. With its IP address, users can use standard PC browser to visit IP camera, real time monitor targets, manage and store video or image, PTZ control also is available through network.

As a new member in camera family, IP camera shares the same operation function with the analog camera, such as, auto white balance, auto shutter speed, AGC, auto backlight compensation etc. On the other hand, IP camera supports remote access through internet, and support multi-user visit, some IP cameras are able to extend to both analog and digital signal.

The core of Wanscam AJ series IP cameras is 32Bit RSIC, adopts standard MJPEG compression format, camera sensor is CMOS, support auto white balance and backlight compensation, support internet browser, and cell phone view. In general, according to the function of audio simplex & duplex, infrared, wired, wireless, POE, PTZ, local storage, it has hundreds of products, to meet requirements of high, middle, low ranks of users.

1. Introduction

1.1 Safety Instructions

(1). Use the proper power source.

Do not use this product with a power source that supplies more than the specified Voltage(100-240V AC).

(2). Never insert anything metallic into the camera.

Inserting metal object into the camera can be a source of dangerous electric shock.

(3). Do not operate in wet or dusty environment.

Avoid places like a damp basement or dusty hallway.

(4). Do not attempt to disassemble the camera.

You may be subjected to severe electrical shock if you attempt to take apart the camera while the camera is connected to its power source. If there are any unusual sounds or smells coming from the camera, unplug it immediately and contact Customer Service.

(5). Handle the camera carefully

Dropping the camera on any hard surface may cause a malfunction. If the camera does not work properly due to physical damage, please contact Customer Service for repair or exchange.

(6). Apply to FCC and CE Rule

This device complies with part 15 of the FCC and CE Rules. Operation is subject to the following two conditions:

- 1: This device may not cause harmful interference.
- 2: This device must accept any interference received, including interference that may cause undesired operation.

Any changes or modifications not expressly approved by the party responsible for compliance could void the user's authority to operate the equipment. This equipment complies with FCC and CE radiation exposure limits set forth for uncontrolled environment. This equipment should be installed and operated with minimum distance 20 cm between the radiator & your body.

This transmitter must not be co-located or operating in conjunction with any other antenna or transmitter.

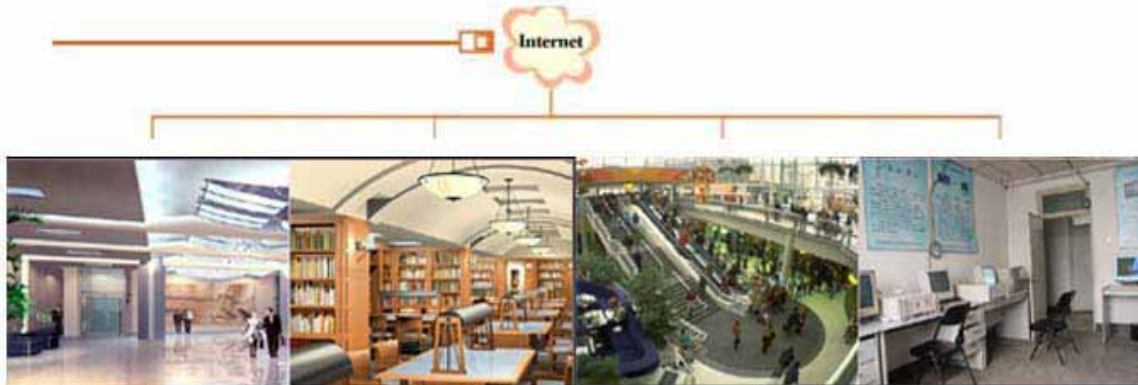
1.2. Product Specifications

- *- Adopt high Performance, strong function media processor 32Bit RSIC
- *- High sensor CMOS
- *-Adopt optimized MJPEG video compression algorithm, realize high-definition images transmission in narrow bandwidth;

- *-Maximum support 15 users viewing at the same time, no limit for users if using forwarder
- Server function;
- *- Built in Web Server, convenient for users to use standard browse to realize the real time monitoring and setting administration;
 - *-Support WIFI : 802 . 11b/g wireless networking;
 - *-Support remote system update;
 - *-Support DDNS analysis, support LAN & Internet (ADSL,Cable Modem)
 - *-Support variety of network protocol: TCP/IP, UDP, SMTP, PPPoE, Dynamic DNS, DNS Client, SNTP, BOOTP, DHCP, FTP, SNMP, WIFI/802. 11b/g
 - *-Parts of modes products support one/ two way audio, talkback;
 - *-Support motion detection alarm function (area & sensitivity Configurable);
 - *-Support image snapshot
 - *-Abnormal automatic recovery function, auto reconnection available when network Interruption occurred.
 - *-Dynamic alarm function, alarm time-schedule configurable.

1.3. Applications

Wanscam AJ series products are ideal choice for big department, chain store, supermarket, home, factory, workshop etc.



1.4. System Requirements

CPU:	2.06GHZ or above
Memory:	256M or above
Network Card:	10M or above
Display Card:	64M or above
Operating System:	Windows XP/Vista/Windows 7 (32 bit OR 64 bit)
Hard Disk Drive:	No Maximum Storage Requirement
Internet Explorer:	Version 5.0 or above
DirectX:	Version 8.0 or above
Audio Card:	PC must have microphone and speaker connected and configured for 2-Way audio play.
Network Protocol:	TCP/IP, UDP, SMTP, PPPoE, Dynamic DNS, DNS Client, SNTP, BOOTP, FTP, SNMP, Wifi (802.11 b/g)

2. Products Panels and Controls .

There are two kinds of the panels of Wanscam AJ series IP camera mailly divided into two kinds: one is body guard interface, the other is the extend line interface, set two representative products as examples, to give explanation:

*Non-extended line IP Camera icon

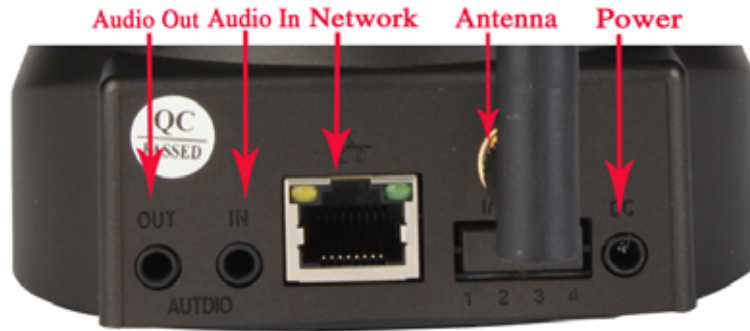


*Extended line IP Camera icon



2.1. Main Interface Introduction of AJ Series Products

*Non-extended line IP Camera Tailgate



1: Audio Out , 2: Audio In

3: Ethernet interface: RJ-45 interface. Power Supply Light: constant on after power up

Network light: constant sparkle after power up data transmission.

4: Antenna:

5: Power input interface: connect direct current 5V Power

*Extension line interface definition icon:



Extension Line Of AJ Series

Power: direct current 12V.

Reset line: two reset line short circuit, equipments restore to ex- factory standards.

Ethernet interface: RJ-45 network interface.

3. Installation

3.1 Connecting you camera to your local network

When installing the camera to the local network for the first time, the camera must be connected to an Ethernet input on your router so that your network can locate your camera.

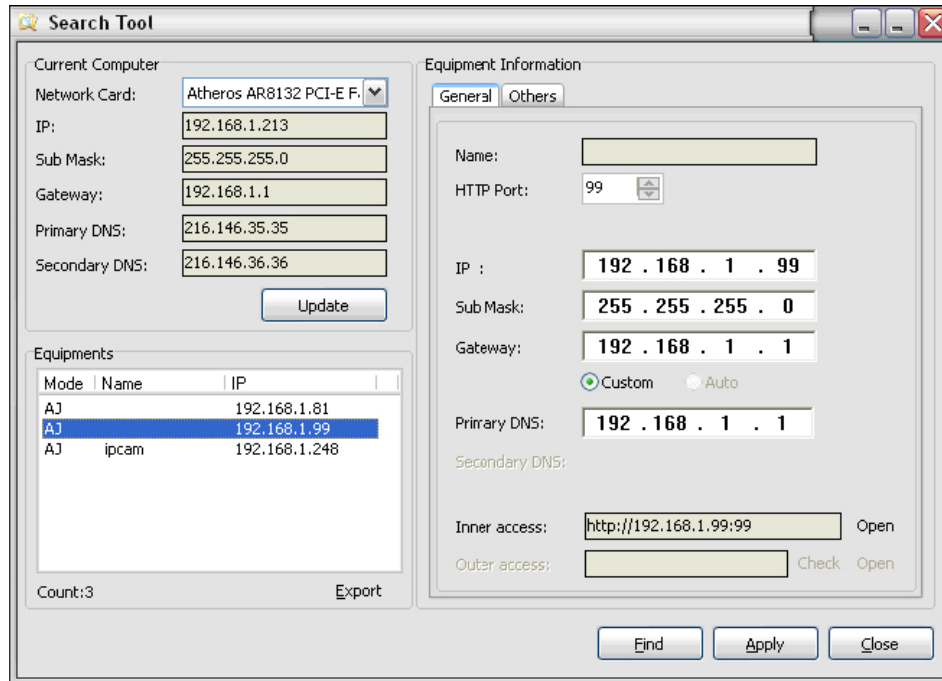


1. Power on the camera in close proximity to your router.
2. Directly connect your camera to your router using the Ethernet cable. If the yellow and green indicator lights on the camera are blinking, then your camera is successfully communicating with your router.
3. Insert the software CD (included) into your PC.

The Data in the CD



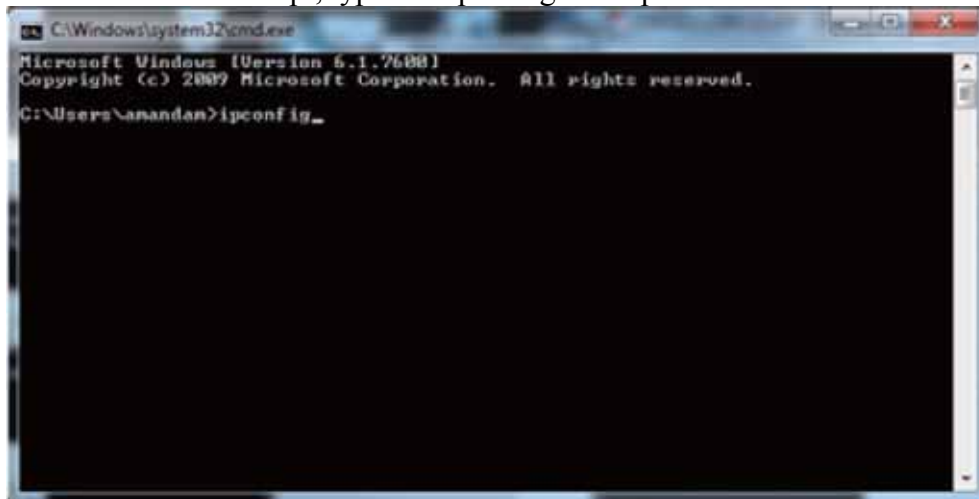
4. Run the program labeled “ OCX Setup” form the flie folder on the software CD.
5. After the “OCX Setup” program has installed. Please run the “ Search Tool” software. This software is used to search the IP address of the ip camera in your local network. Note: “ Search Tool” Software no need to install, if you need it , you can copy it to your desktop of your PC.



6. Click “Find” to find the IP Camera on your router. (If you have several items on your router, Check the bottom of the camera for the factory IP setting.)

7. Once you have located the camera on your router, open the command prompt(cmd).

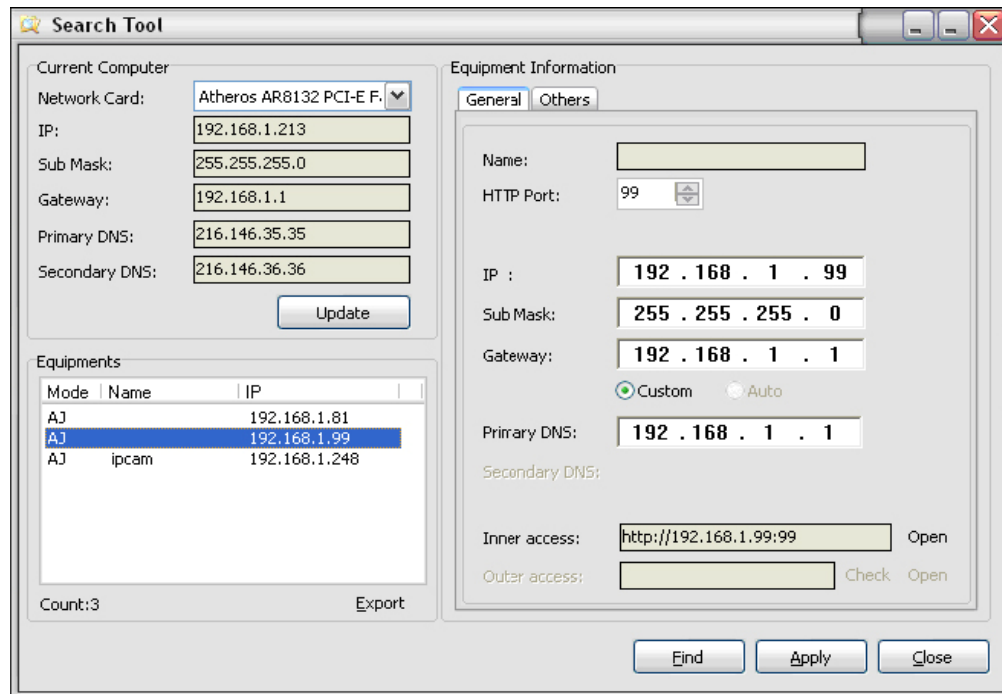
8. From the Command Prompt, type in “ ipconfig” then press Enter.



9. Write down the number that represents the Default Gateway, then go back into the Search Tool.

3.2 Connecting Your Camera To Your Local Network-Continued

10. Running the Search Tool software, If network cable and power supply are correctly connected, device type, name and IP address will be shown in the Equipments list (Otherwise, please confirm whether power supply and network cable work normally).



In the picture above, the configuration information of the current computer is listed on the left side; and the network configuration information of the selected device is listed on the right side. Default IP address of the IP camera is 192.168.1.99, and HTTP port is 99.

From the Search Tool, Select your IP camera. Here, you will need to re-address your camera's IP address based off of your Local Network Default Gateway. For example: If your Default Gateway is 192.168.1.1, you should change the last set of values of your address from 1 to a larger value such as 99. Therefore, your new address will read "192.168.1.99" (The last set of values must be lower than 254).

11. Next, change the Gateway and DNS IP address in the network setting to exactly match your Default Gateway.

12. Now Change the Data Port to 80.

13. Last click "Apply" enter the Username and Password. The Username will be "admin" and the Password field will remain empty.

14. Last, click "OK" and your camera will automatically reboot as it saves all changes that you have just made.

*** The first time that you connect to your camera either from your local network or from a remote network, you will need to connect using an internet Explorer browser, and you must prompt three necessary ActiveX controls. Please refer to Section 4 for ActiveX configuration.

4. Prompting the necessary ActiveX controls

The first time you access your camera online from a new computer(including the LiveDemo), you will need to prompt three necessary ActiveX controls.

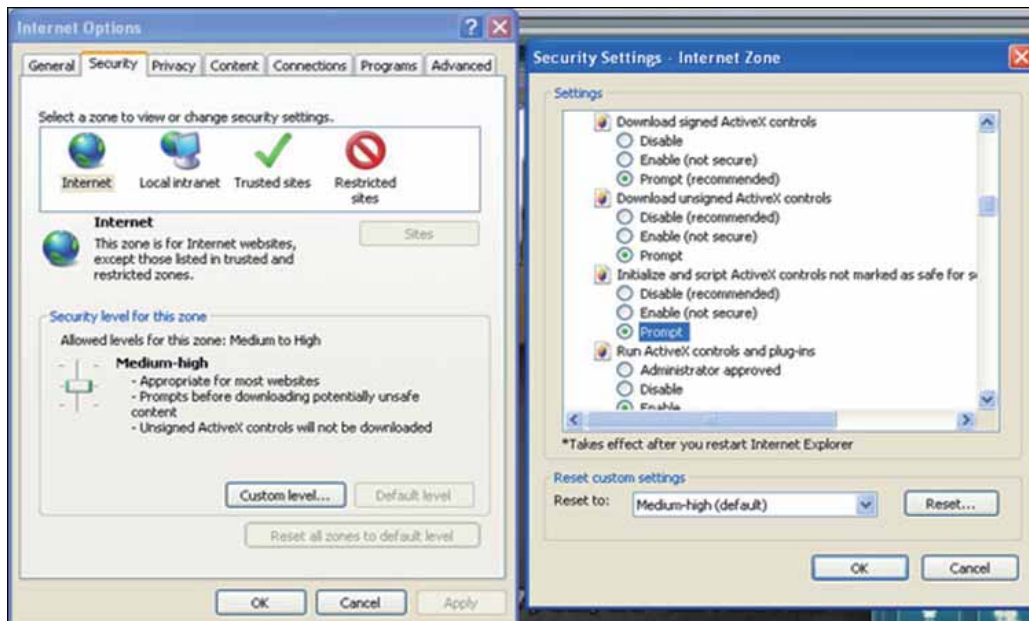
1. From Internet Explorer click on “Tools” then select “ Internet Options.” Select the “Security” tab, and then click the “Custom Level” button.
 - If you are using either Windows Vista or Windows 7, please run Internet Explorer as Administrator.

Now, change the tree following options to “Prompt”:

---Download Signed ActiveX controls

---Download Unsigned ActiveX controls

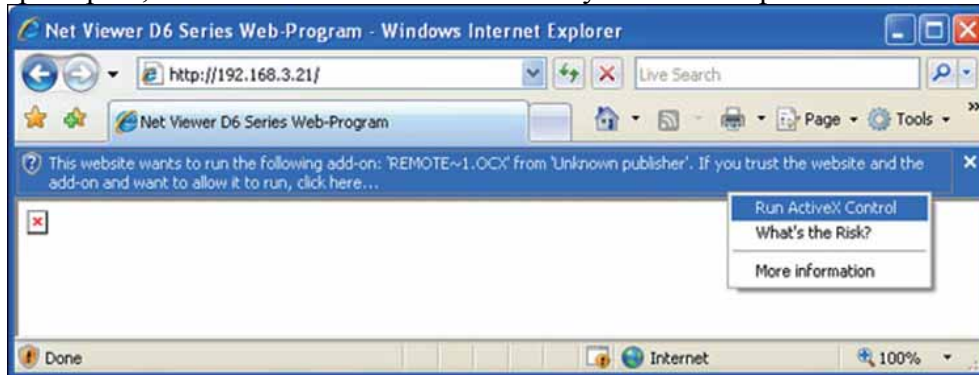
---Initialize and script ActiveX controls not marked as safe for scripting.



2. After all three ActiveX controls are prompted; please login to you camera’s IP address. If this is your first time logging into your camera, you will type into an internet Explorer browser http:// followed by the IP address that you’ve entered into the IP address field of the network setting section. For example, the address will look like this: Http://192.168.1.99

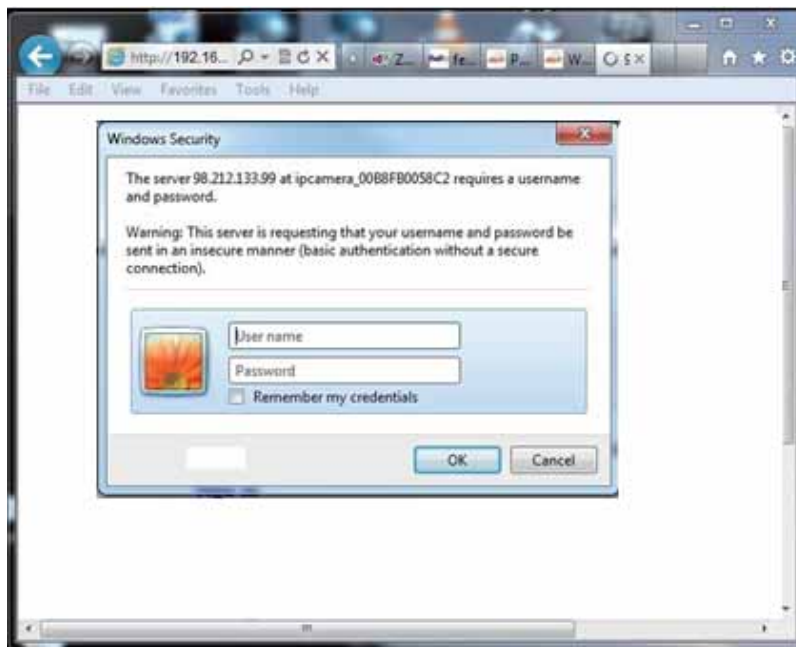
4.1 Prompting the necessary ActiveX controls-continued

3. This will usually prompt you or a bar may appear on the top of the page. If prompted, select run or install. Click on the yellow bar to proceed.



*If you are using Internet Explorer version 9.0 , this prompt bar will appear on the bottom of your browser instead of at the top of your browser.

5. Logging into your camera from a local internet location

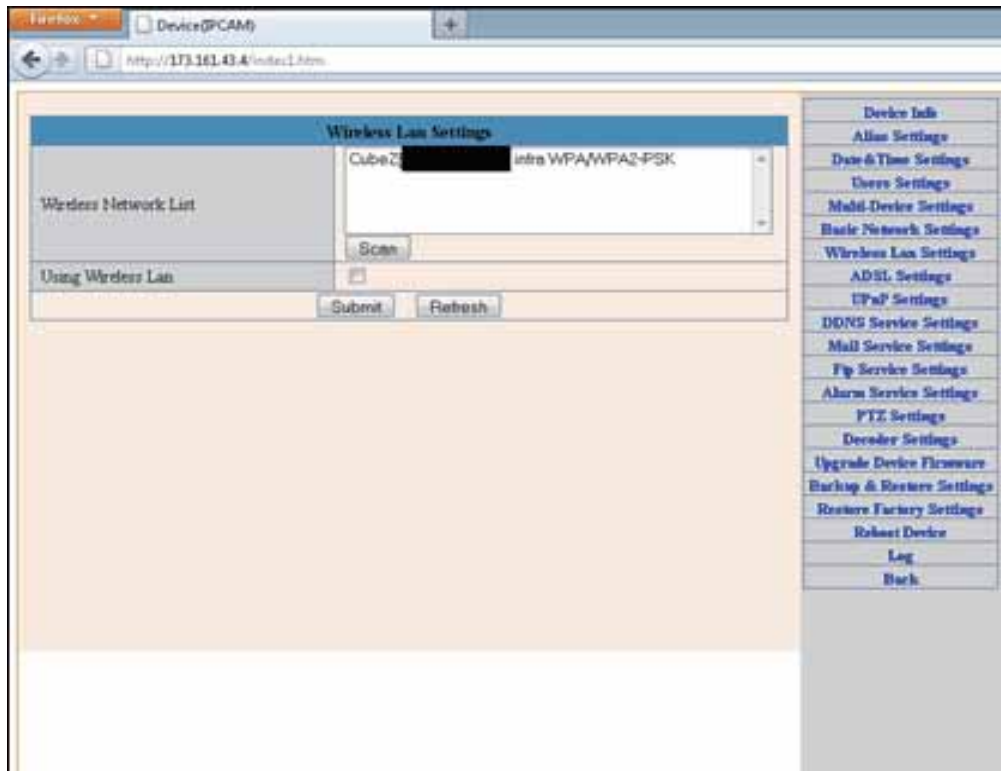


1. To access your camera from your local connection, you will need to open an Internet Explorer browser. In the browser, type Http:// followed by the IP address that you've entered into the IP address field of the network setting section. For Example, The address will look something like this : [Http://192.168.1.99](http://192.168.1.99)

2. A Windows Security pop-up will appear. In this window, Type “admin” as the Username, and Leave the Password field empty.
3. Once the Username and Password are accepted, choose the option to sign in using ActiveX Mode (For IE Browser).

6. Enabling wireless connection using a wireless router

1. While your camera is still connected directly to your router with an Ethernet cable, go to the Wireless Lan Settings section on your camera’s menu.
2. Next, click ‘Scan’ to search for available wireless networks.



3. Once you have selected your wireless network, enter your wireless network’s password into the “Shared Key” field.
4. After you click submit your camera should automatically reboot to save these settings. Please wait 30 seconds after your camera has rebooted, then you may disconnect the Ethernet cable that is connecting your camera to your router.
5. Your camera should now be successfully communicating wirelessly with your wireless router.

Wireless Lan Settings	
Wireless Network List	<div style="border: 1px solid gray; padding: 2px;"> TP-LINK_D93D0E[e005c5d93d0e] infra None H3C_WBR204g+[000fe24f0480] infra WPA/WPA2-PSK TP-LINK_69A38E[54e6fc76abfc] infra WPA/WPA2-PSK xha88[e005c5ac83d6] infra WPA/WPA2-PSK </div>
	<input type="button" value="Scan"/> 1:Click the Wireless Network which you wanted.
Using Wireless Lan	<input checked="" type="checkbox"/>
SSID	<input type="text" value="xha88"/>
Network Type	Infra
Encryption	WPA Personal (TKIP)
Share Key	wanscam.com 2:Input the password of your wireless network.
	3:Finally click Submit <input type="button" value="Submit"/> <input type="button" value="Refresh"/>

7. Configuring the remote access

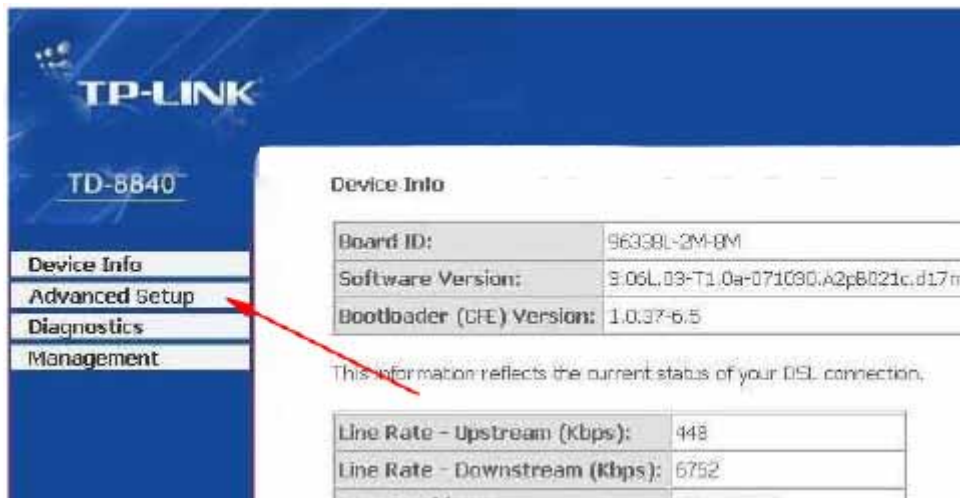
1). Each manufacturer of routers handles Port Forwarding in a different way. For detailed, router specific instructions, please visit www.portforward.com and find the model of your router. Then select 'Default Guide' for detailed screenshots and use them to help you through the rest of these instructions.

1. Open Internet Explorer and type in the IP address of your Default Gateway. This opens the configuration page of your router.
2. Next, create a Port Forwarding rule for the IP camera.
 - A. The port number to forward will be 80 if you have followed the manual thus far.
 - B. Your Router will ask for an IP address as well. Input the IP address of your IP camera.
3. After creating the Port Forwarding rule, visit [Http:// www.yougetsignal.com/tools/open-ports/](http://www.yougetsignal.com/tools/open-ports/)
 - A. Write down your external address, it will be used later.
 - B. In the box that says 'Port Number', Type in the port number that you have created a port Forwarding rule for, and click "Check"
 - C. If it says 'Port is open' then you have set up Port Forwarding properly and you can now access your IP camera from another location.

2). Port Forwarding For TP-LINK TD-8840 WIFI Router

Take the TP-LINK TD-8840 router port mapping setting as example. To set up IP Camera as an example: router inner web IP is 192.168.1.1, IP camera inner web address is 192.168.1.50, and port is 80.

1. First log in router web administration interface.
2. Click in front of left side “Advanced Setup



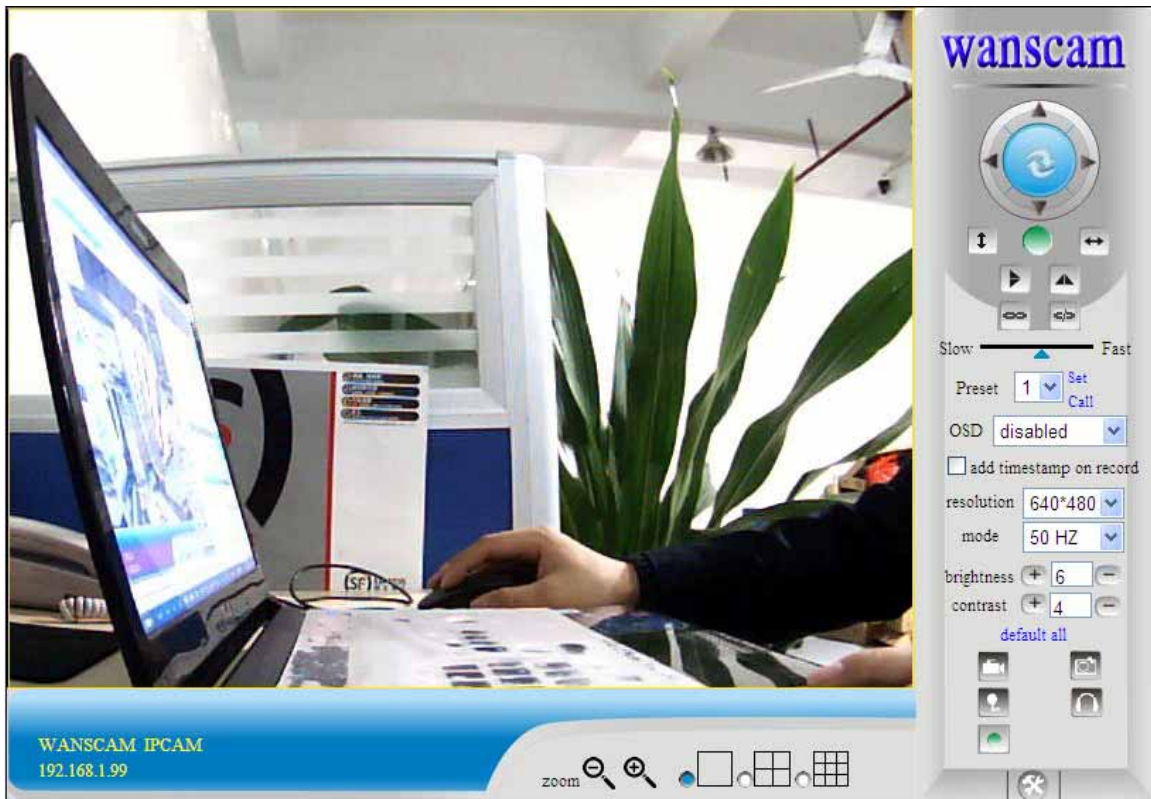
3. Click “virtual server” in the unfolded menu.




4. fill “80” under the right **port start** or **port end**, **Server IP address** fill "192.168.1.50", protocol select "TCP/UDP"OR"TCP", finally don't forget click under ""save/apply""

1. DLINK ex-factory definition router address is 192.168.0.1
2. Linksys ex-factory definition router address is 192.168.1.1
3. 3com ex-factory definition router address is 192.168.2.1
4. Microsoft ex-factory definition router address is 192.168.2.1
5. Net gear ex-factory definition router address is 192.168.1.1
6. Asus ex-factory definition router address is 192.168.1.1



8. Main menu interface operation




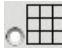
For example: If the  is a bright , indicating the device is the first way to monitor the status.

When you log on the operator interface, you can perform PTZ and video parameters


Direction control: Click the arrows in different directions can be the lens to the appropriate direction of rotation



 Vertical cruise  Level cruise

1. Image mirror indicates a reverse image.
2. Resolution, mode, brightness, contrast default setting are : 320*240、 50HZ、 6、 4、 mode is mainly for the adjustment of Light strength, please adjust to 60HZ when light is poor or in dark.
3. There are 3 browse modes in IE mode: visitor, operator, administrator, the authority of administrator is the highest, log in different authorities, the operation will be different. Regarding to 3 user authorities, please refer to 3.4.4. Equipment User Administration.

If you want to see 4-way, or 9-way , you can click the icon  or 

OSD: In the video display date and time. You can disable the OSD function or choose the color of OSD.

Snapshot Photo: Click the icon  interception photo.

Video: Click  icon to enter the recording mode, the icon becomes  , again, click the end of the recording.

8.1. Manager Operation

When you logged on as Administrator, click on “Administrator action” to enter setting interface. Device Information: You can see the device serial number, equipment systems and device firmware version of the application firmware version of the.

Alias setting : You can set your favorite device aliases.

Date&Time set : setting the date and time.

User settings : Can be set up to 8 users. On this page you can set up accounts of the user name, password, as well as in their packet (administrator, operator, visitor).

- **Visitor :** In this mode, you can only visit.
- **Operator :** You can set the direction of the lens device, set the video screen's brightness, contrast and other parameter.
- **Administrator :** You can set the device advanced configuration.

UPnP set : If you want internet access IPCAM, to ensure that the state is successful UPnP.

Device Firmware Upgrade: The system firmware update the device firmware and application of

Restore factory settings : When there is not a response when the error occurred, you can restore the factory settings to resolve the device.

I rebooted the device :I rebooted the device.

Back: Return to monitor mode

8.1.1 Multi-Device Settings

- Add a local area network equipment

In the multi-device configuration page, you can see all the equipment inside the LAN. The first device is the default device. You can add more devices listed in the list of equipment. Embedded applications, up to 4 devices at the same time-line. Click the “second road equipment” and double-click “Current list of devices in the LAN” in the device entry name, host address, Http port will automatically be filled, require the user to fill in the correct account name and password, click “Add.” Repeat this process you can continue to add devices. Finally do not forget to click on the “Settings” button.

Multi-Device Settings	
Device List in Lan	anonymous(192.168.1.99) WASCAM IP CAMERA(192.168.1.81)
	<input type="button" value="Refresh"/>
The 1st Device	This Device
The 2nd Device	None
The 3rd Device	None
The 4th Device	None
The 5th Device	None
The 6th Device	None
The 7th Device	None
The 8th Device	None
The 9th Device	None
attention: If you want to access the device from internet, be sure the host and port that you set can be accessed from internet.	
	<input type="button" value="Submit"/> <input type="button" value="Refresh"/>

Device Info
Alias Settings
Date&Time Settings
Users Settings
Multi-Device Settings
Basic Network Settings
Wireless Lan Settings
ADSL Settings
UPnP Settings
DDNS Service Settings
Mail Service Settings
Ftp Service Settings
MSN Settings
Alarm Service Settings
PTZ Settings
Decoder Settings
Upgrade Device Firmware
Backup & Restore Settings
Restore Factory Settings
Reboot Device
Log
Back

- Add a device on the internet

First, make sure you want to add devices to access via IP address or domain name. For example:http://202.96.133.134: 9008 or <http://IPcam.dyndns.org:9008>. And then fill in host address: 202.96.133.134 **HttpPort:** 9008 or host address: IPcam.dyndns.org **Http port:** 9008. and fill in the correct account name and password to the last click on “Add.” Repeat the above steps can add other devices



8.1.2 Basic Network Settings

Basic Network Settings	
Obtain IP from DHCP Server	<input type="checkbox"/>
IP Addr	192.168.1.99
Subnet Mask	255.255.255.0
Gateway	192.168.1.1
DNS Server	202.96.134.33
Http Port	99
<input type="button" value="Submit"/> <input type="button" value="Refresh"/>	

- [Device Info](#)
- [Alias Settings](#)
- [Date&Time Settings](#)
- [Users Settings](#)
- [Multi-Device Settings](#)
- [Basic Network Settings](#)
- [Wireless Lan Settings](#)
- [ADSL Settings](#)
- [UPnP Settings](#)
- [DDNS Service Settings](#)
- [Mail Service Settings](#)

This sector is for DHCP and IP configuration , port forwarding is needed, If you choose to set IP address , please fill in the relative IP address、 subnet mask, gateway, DNS server, Http port;

8.1.3 Wireless Setting

For the details please view “6. Enabling wireless connection using a wireless router”.
Page 14th.

8.1.4 ADSL Setting

When your device directly connected to the Internet via ADSL, when you need to enter fill in your ISP service providers obtain from the account name and password. Duly completed and click “Settings” button. Your device can connect to the internet has.

ADSL Settings	
Using ADSL Dialup	<input checked="" type="checkbox"/>
ADSL User	<input type="text"/>
ADSL Password	<input type="password"/>
<input type="button" value="Submit"/> <input type="button" value="Refresh"/>	

8.1.5 Dynamic DNS Setting (DDNS)

DDNS Service Settings	
DDNS Service	88safe.com(dyndns) ▾
DDNS User	wanscam
DDNS Password	••••••
DDNS Host	/vipddns/upgengxin.asp
DDNS or Proxy Server	www.88safe.com
DDNS or Proxy Port	8009
Re-Update Ignoring All Errors	<input type="checkbox"/> never do this unless your hostname has been unblocked
proxy config is needed if the device is in China Mainland or HongKong	
<input type="button" value="Submit"/> <input type="button" value="Refresh"/>	

All the above information is set up when the device is ready to deliver; users generally do not need to change. In case of any accidental loss, user needs to re-obtain the domain name, and fill it himself, just do as the above, the user's name is just the first four characters, and this is for remote access. For example, http://abcd.viipc.com the user's name is abcd. The password is DDNS. (The password can be obtained on the device body or contact the supplier). When connected, it displays "xxxxx is OK" on Device Info; it means that it was successfully set. If you need to use your own Dynamic DNS, please select the appropriate service providers (on DDNS service) then enter the following information, then save it;

8.1.6 E-mail and FTP service Settings

Mail Service Settings	
Sender	<input type="text"/>
Receiver 1	<input type="text"/>
Receiver 2	<input type="text"/>
Receiver 3	<input type="text"/>
Receiver 4	<input type="text"/>
SMTP Server	<input type="text"/>
SMTP Port	25
Transport Layer Security Protocol	None <input type="button" value="v"/>
	Gmail only support TLS at 465 port and STARTTLS at 25/587 port.
Need Authentication	<input type="checkbox"/>
	<input type="button" value="Test"/> Please set at first, and then test.
Report Internet IP by Mail	<input type="checkbox"/>
<input type="button" value="Submit"/> <input type="button" value="Refresh"/>	

[Device Info](#)
[Alias Settings](#)
[Date&Time Settings](#)
[Users Settings](#)
[Multi-Device Settings](#)
[Basic Network Settings](#)
[Wireless Lan Settings](#)
[ADSL Settings](#)
[UPnP Settings](#)
[DDNS Service Settings](#)
[Mail Service Settings](#)
[Ftp Service Settings](#)
[MSN Settings](#)
[Alarm Service Settings](#)
[PIZ Settings](#)
[Decoder Settings](#)
[Upgrade Device Firmware](#)
[Backup & Restore Settings](#)
[Restore Factory Settings](#)
[Reboot Device](#)

The above setting is a preparation for the alarm function, the sender should be entered the sender's email address , recipient 1、 2、 3、 4 is filled with recipient E-mail address ; SMTP server should be filled with the sender email SMTP server , e.g. the sender email address is abc@163.com , and enter mail.163.com. Generally SMTP port is 25 , do no need to change ; when needs to check, just tick it, and enter SMTP user and SMTP password , both of them are provided by Email provider , and test according to reference ; when needs to send, please tick Email notification Internet IP address ; The e-mail server and other information can be obtained from the mail service provider the email notification is image captured when alarming if no email notification is needed when alarming, and then no need to enter.

Set up FTP service, you can fill in parameters like following:

Ftp Service Settings	
FTP Server	<input type="text"/>
FTP Port	21
FTP User	<input type="text"/>
FTP Password	<input type="text"/>
FTP Upload Folder	<input type="text"/>
FTP Mode	PORT <input type="button" value="v"/>
	<input type="button" value="Test"/> Please set at first, and then test.
Upload Image Now	<input type="checkbox"/>
<input type="button" value="Submit"/> <input type="button" value="Refresh"/>	

The above setting is equally similar to Mail Server Settings , when alarming is triggered it also sends image , please enter FTP server、 FTP port、 FTP user、 FTP password, FTP upload directory、 FTP mode , FTP mode has two options: PORT and POSV. If needs a quick upload image, then select it, edit upload image interval (second)

8.1.7 Alarm Service Settings

As shown below, there are two modes of alarm trigger, first one is motion detection, pleas refer to below interface , the sensitivity of motion detection can be adjusted according to the users' requirement, the higher the number is, the lower sensitivity is; Another mode is input alarm, when connected, it triggers alarm through alarm input signal which connects to linkage alarm GPIO;

When triggered, there are 3 alarm modes : one is IO alarm linkage, camera connects with linkage alarm box through GPIO, sound the siren ; the second is email notification, send email with images captured ; the last is upload pictures alarm , as the way mentioned before FTP upload pictures alarm, Upload pictures interval (second) keeps consisten t with the mentioned upload pictures interval of Ftp service settings. The schedule refers to arming time , as the selected time interval : 0 : 00 minute per week to 0 : 45 minutes and Monday 1 : 00 hour and 2 : 00 hour

Alarm Service Settings	
Motion Detect Armed	<input checked="" type="checkbox"/>
Motion Detect Sensibility	5
Alarm Input Armed	<input checked="" type="checkbox"/>
Triger Level	High
IO Linkage on Alarm	<input checked="" type="checkbox"/>
Output Level	Low
Send Mail on Alarm	<input checked="" type="checkbox"/>
Upload Image on Alarm	<input checked="" type="checkbox"/>
Upload Interval (Seconds)	0
Scheduler	<input checked="" type="checkbox"/>
Day	0 1 2 3 4 5 6 7 8 9 10 11 12 13 14 15 16 17 18 19 20 21 22 23
Sun	
Mon	
Tue	
Wed	
Thu	
Fri	
Sat	
<input type="button" value="Submit"/> <input type="button" value="Refresh"/>	

Device info

Alias Settings

Date&Time Settings

Users Settings

Multi-Device Settings

Basic Network Settings

Wireless Lan Settings

ADSL Settings

UPnP Settings

DDNS Service Settings

Mail Service Settings

Ftp Service Settings

MSN Settings

Alarm Service Settings

PTZ Settings

Decoder Settings

Upgrade Device Firmware

Backup & Restore Settings

Restore Factory Settings

Reboot Device

Log

Back

Figure3.15

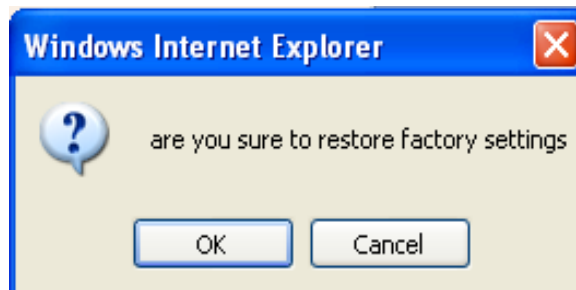
8.1.8 Reset/Firm Ware Upgrade

This sector is for camera firmware upgrade, it includes device system firmware [Upgrade Device Firmware](#) and device application firmware [Upgrade Device Embedded Web UI](#). Be cautious to apply for it!

Upgrade Device Firmware			
Upgrade Device Firmware	<input type="text"/>	<input type="button" value="Browse..."/>	<input type="button" value="Submit"/>
Upgrade Device Embedded Web UI	<input type="text"/>	<input type="button" value="Browse..."/>	<input type="button" value="Submit"/>

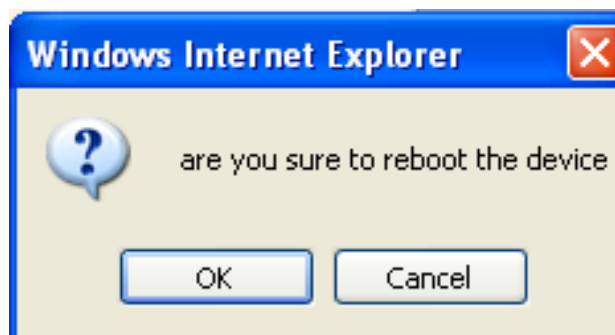
8.1.9 Restore Factory Settings

When users forget password, we can restore ex-factory settings, when click, a picture will pop up, Click ok, and wait for 1 minute and you can use it normally. User setting feature restores



8.1.10 Reboot Equipment

Click restart, it appears the above picture, click ok, wait for 1 minute and you can use it normally



9. Warranty

Under normal use condition, products resulting from its own failures in the warranty period will be free maintenance. Warranty Terms as following:

a) Charge-free maintenance of the product is one year. We can repair it for free during the guarantee period (Damages not caused by misuse or vandalism).

Repair over guarantee period, we will charge maintenance fee.

b) During guarantee period, breakdown caused by misuse or other reasons out of range of warranty. You could ask repair depend on the card. We only charge for changed components, the maintenance charge is free.

c) When the products need maintenance, hand up the card with products to the manufacture or local distributor.

d) Take apart item crust, tear up the sealing label privately, this is out of warranty range.

e) We do not accept the damaged item due to modification or add other functions.

The Following Circumstances will not be free warranty

a) Period check, maintenance or change components due to normal attrition.

b) The damages due to crash, extrusion, artificial flooding, moisture or other personal reasons.

c) The damages due to floods, fire, lightning strike and other natural calamities or force majeure incidents factors

d) Repaired item by non-authorized repair centers.

All above terms, if changed, regarded to relevant regulations.

THAT'S ALL, THANK YOU!