

CMS200 User Manual
VERSION 2.4.0.0 (Build 100831)
2010-09-03

Welcome

Thank you for purchasing our product!

This operating manual is designed to be a reference tool for the installation and operation of your system.

Disclaimer: Visiondigi (Shanghai) Technology Co.,Ltd. reserves the right without notice to change, add, modify or remove any information and materials on this manual in any manner and at any time. All materials accurate through carefully checking, but Vision Digital Technology shall not be responsible to bear the consequence if any errors.

Contents

FEATURES..... 4

WORKING ENVIRONMENT REQUIREMENTS 4

INSTRUCTIONS..... 4

Device (Figure3-3) 6

PTZ Control (Figure 3-5) 7

Color Control (Figure 3-6) 7

Channel Control (Figure 3-7) 7

Video (Figure3-8)..... 8

Monitoring Plan 8

PLAYBACK..... 9

MAP CONTROL..... 12

SYSTEM SETTING 12

Alarm Setting..... 17

LOG 19

BACKUP..... 20

Features

Working Environment Requirements

Hardware Requirements:

CPU P4/2.0G

Graphics card must support hardware scaling (such as ATI, TNT2 PRO) (recommended ATI 9800 or above video card, dual channel) memory 128M or more / 128bit

Note: If solution involves a lot of pictures, memory, graphics card, CPU should be better quality.

NIC: 100/1000M

Software Requirements:

Can support Vista WinXp Win2000 Win2003. Windows 98 is not recommended.

Notes

The software is for connecting multiple devices of different types or models (e.g. DVR、DVS etc.), and this manual is only for the software operation. Please read the specifications of related products if the function setting of specific devices is involved.

This manual is for anyone who is in charge of planning, implementing and reviewing hardware installation of network video surveillance. You should have the basic knowledge and experience of operating the related devices (e.g. DVR、DVS etc.).

Instructions

After the system starts, please enter the user name and password in the login interface. The factory default user name is "admin" and the password is 123456.

Tick the "Save" at the bottom of the login interface to save user name and password so that you can login directly without having to enter the user name and password next time.



(Figure 3-1)

Enter the main program after the adoption of user authentication.

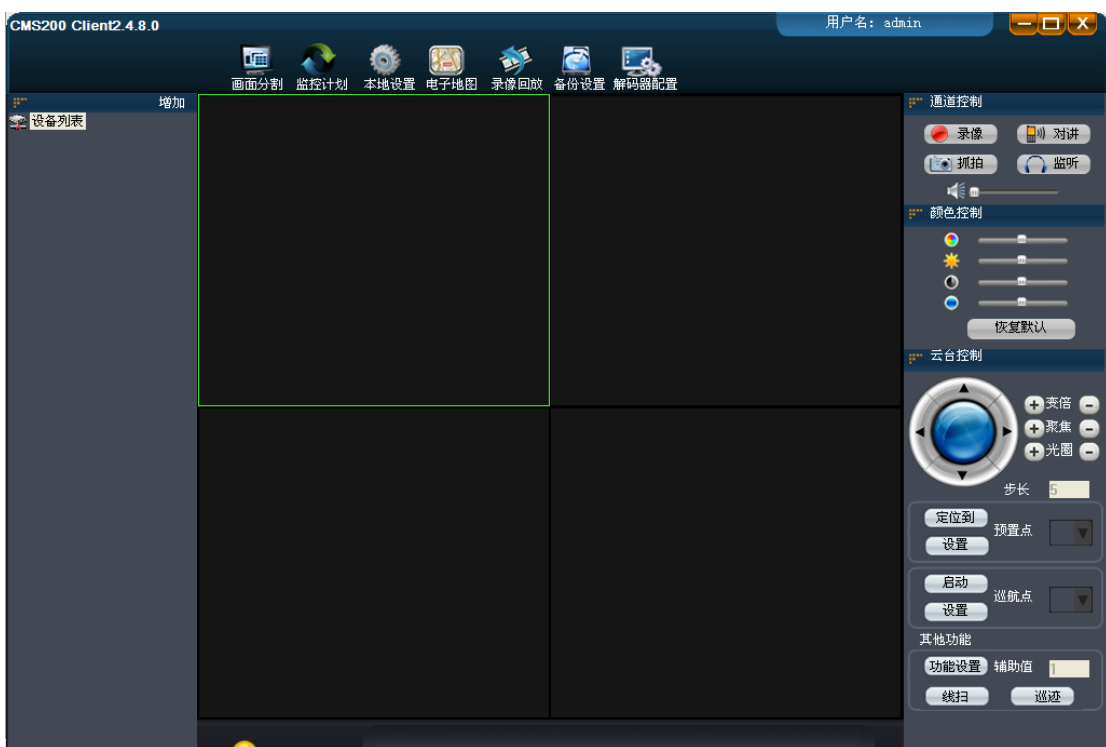
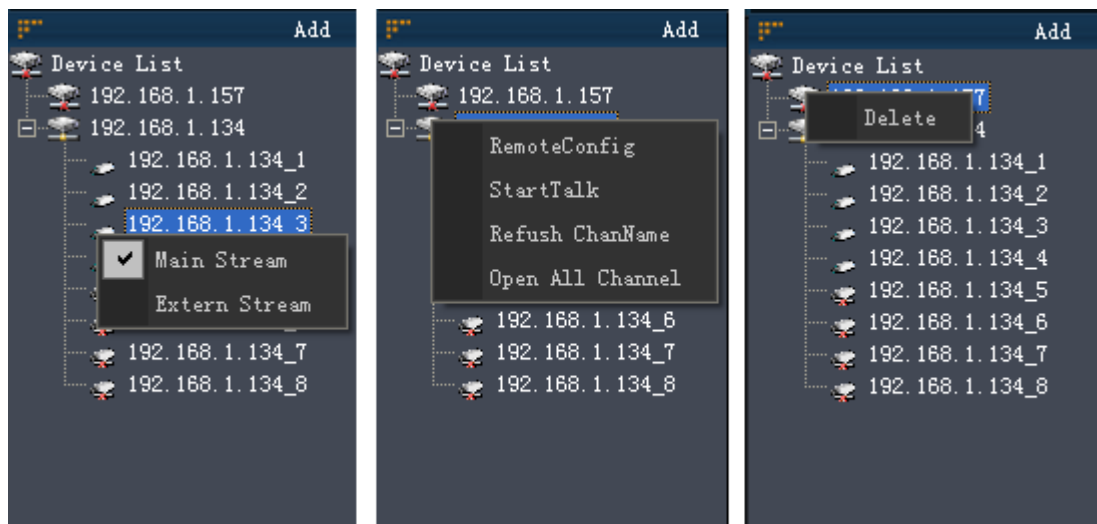


Figure (3-2)

Main options include: Device Management, PTZ Control, Color Control, Screen Division, Playback, Log, Query, System Configuration and Real-time Backup etc.

Device (Figure3-3)

Double click the channel number under the “Device List” to open video. Select main stream or sub stream by right clicking the channel. Operate by right clicking the opened device and delete the device by right clicking the unopened device.



(a) Right click the channel the unopened device (b) Right click the opened device (c) Right click the unopened device

Figure (3-3)

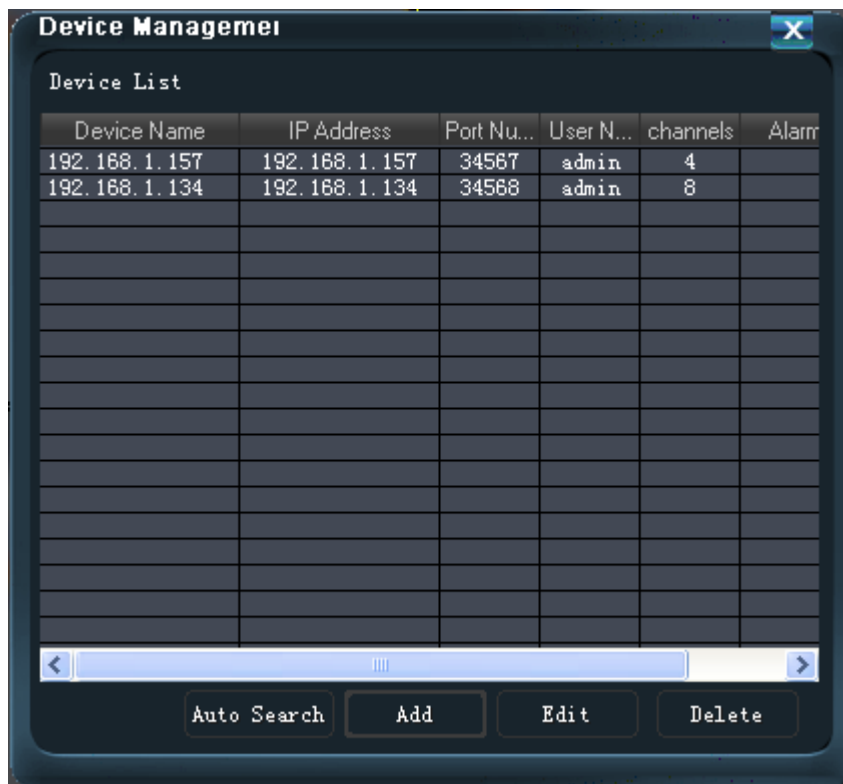


Figure (3-4)

Click “add” in the Device List to enter the interface of Device Management to increase,

delete and modify the information of the devices. The devices on the network can be added by clicking Automatic Search, as Figure 3-4.

PTZ Control (Figure 3-5)



Figure (3-5)

Color Control (Figure 3-6)

As shown below, the interface shows brightness adjustment, contrast adjustment, color adjustment, hue adjustment.

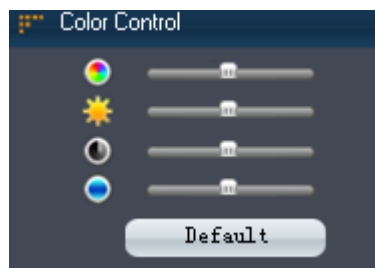
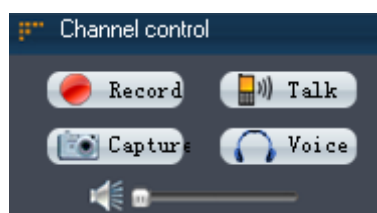


Figure (3-6)

Channel Control (Figure 3-7)



Video (Figure3-8)

After opening the window, the operation menu will pop up by right clicking the window. The options on the operational menu are Close Window, Audio, Local Record and Capture Picture.

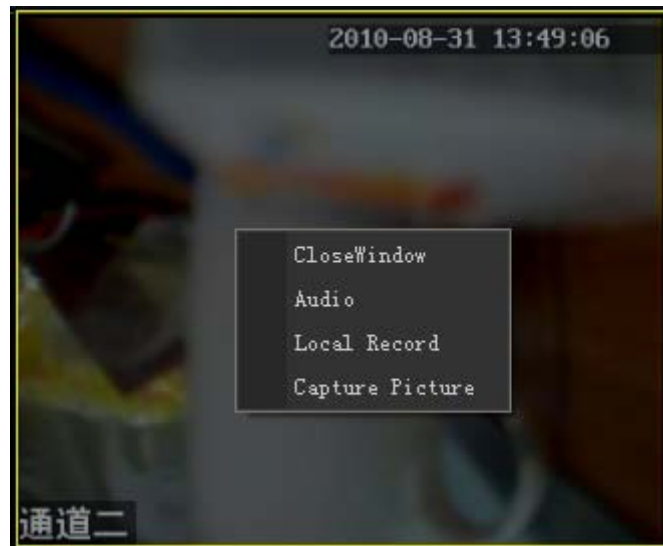



图 (3-7)

Monitoring Plan



Click the second button  at the top, the menu of Monitoring Plan will be displayed. If the Monitoring plan was configured before, the content of the plan will be displayed. Then select any option in the plan to run the Monitoring Plan. Close the original Monitoring plan by reselecting the running plan.

If Monitoring Plan was not configured, you can also select “Config” to enter the interface of Monitoring Plan. (Figure3-8)

Multi Device Selection

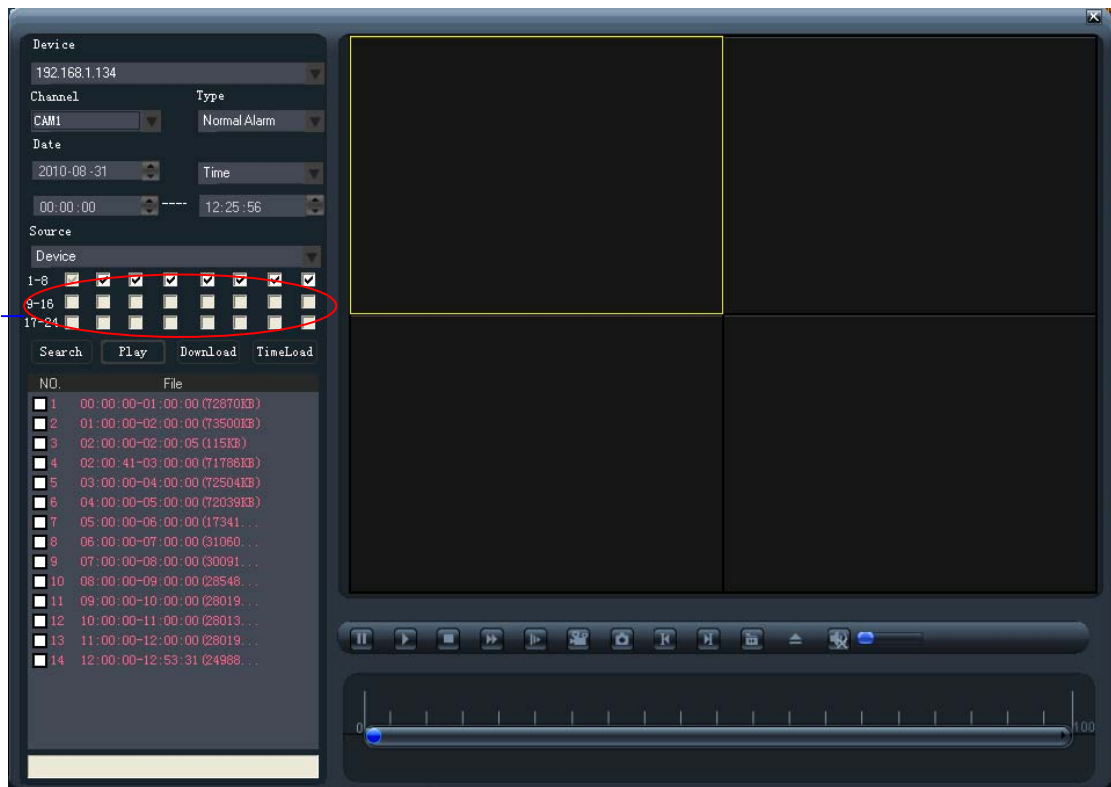


Figure (3-9)

Functions: Search, Play, Download and TimeLoad.

1. If a device is currently connected, the device will be in the device list for you to choose. If no device is connected, you cannot choose it from the device list. You have to enter the main interface to add the device.
2. Select the device.
3. Recording Type: All, Manual, Alarm, Motion detection etc.
4. Start time and End time.
5. Select other channels to start synchronous playback of multi channels
6. Select video source (device or local). Device stands for remote recording of DVR while local means the downloaded files under the feature of real-time backup. Only the videos in the DVR can be downloaded.
7. Click Search button, the recorded files will be displayed in the list box, if there is video.
8. As for single-channel playback, you can tick multi recorded files. Press Play button for continuous play (After a recorded file is played, the next recorded file will be played automatically). Press Download button to download the recorded files. For multi-channel playback, select only one recorded file, press Play button and search for other

channels based on the start time and end time to start synchronous playback.

9. Click Timeload after operating in 1-6 steps. The dialog box3-10 will be prompted. Click to add all the selected channels to the download list.
10. Right click the corresponding entries in the download list to stop downloading, delete the download and other operations
11. Select other devices by operating in 1-6 steps

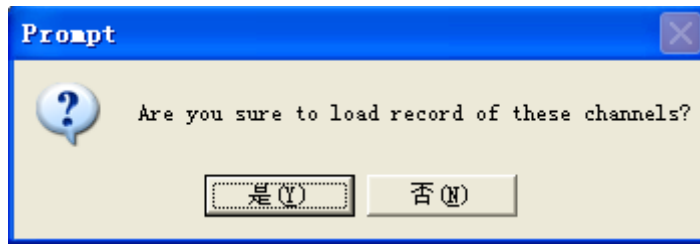


Figure (3-10)

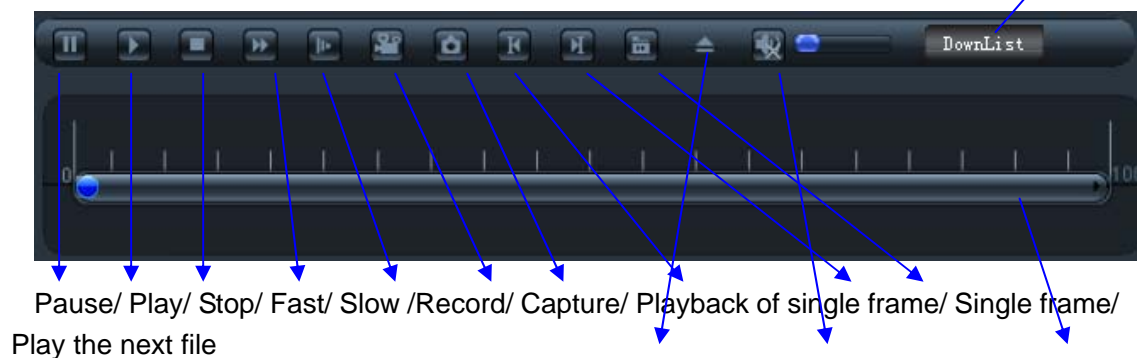
DeviceName	CameraName	Progress	Status
192.168.1.134	channel_0		1/14
192.168.1.134	channel_1		Waiting
192.168.1.134	channel_2		Waiting
192.168.1.134	channel_3		Waiting
192.168.1.134	channel_4		Waiting
192.168.1.134	channel_5		Waiting
192.168.1.134	channel_6		Waiting
192.168.1.134	channel_7		Waiting

Figure (3-11)

Note: The default saving path of Timeload is "Record" file under Installation. You can also set in Local Setting on the main interface.

Operation of player:


Click to show Figure (3-11)

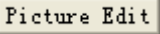
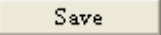
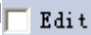


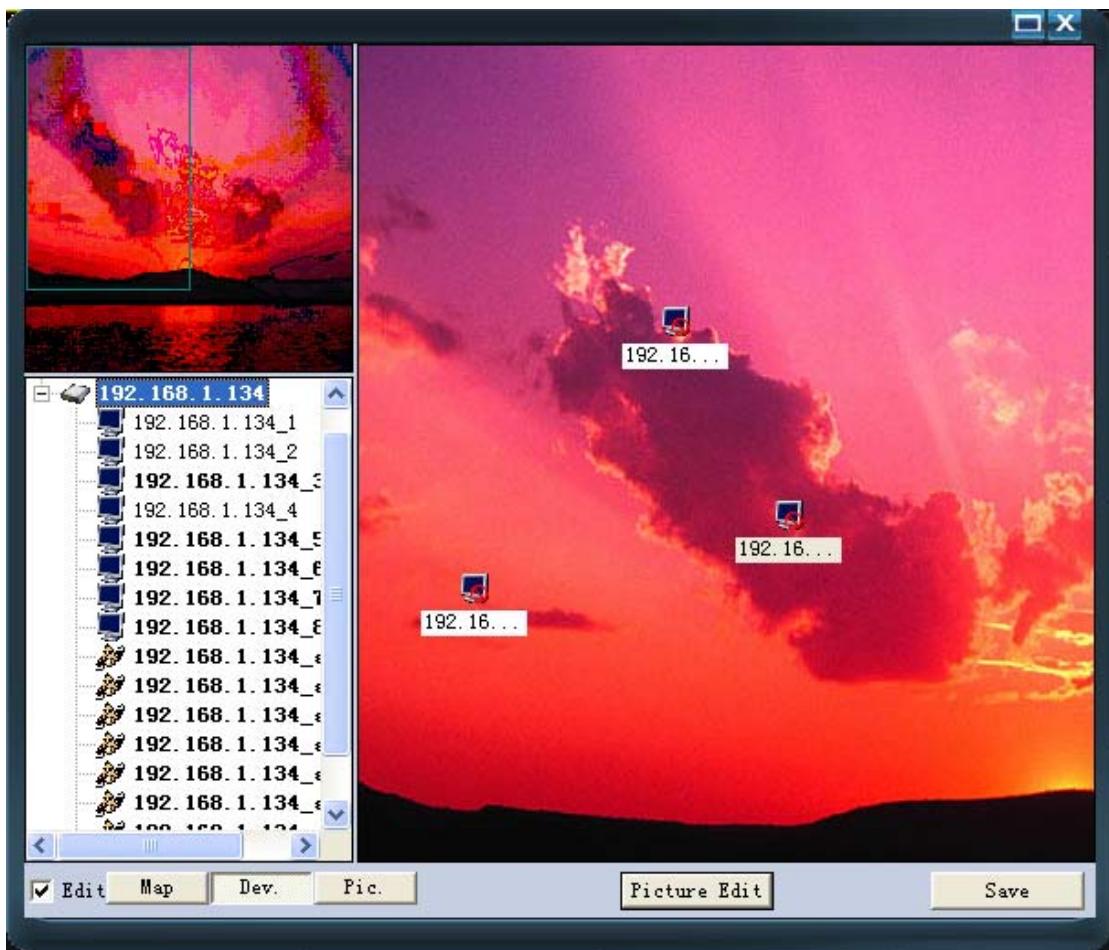
Pause/ Play/ Stop/ Fast/ Slow /Record/ Capture/ Playback of single frame/ Single frame/
Play the next file

Open the local file/ Open and close audio/ Progress bar

Map Control


Click  on the main interface (Figure 3-2) to enter the interface of electrical map control.

Click  to add maps and drag the map in the map list to the window, drag the device in the left device list to the corresponding position on the map. Then save the map information by clicking . Switch the status of map control  to control status. Then double-click the channel icon on the map control to open the channel in the main interface window, and the icon on the map control will flash once alarm is triggered.



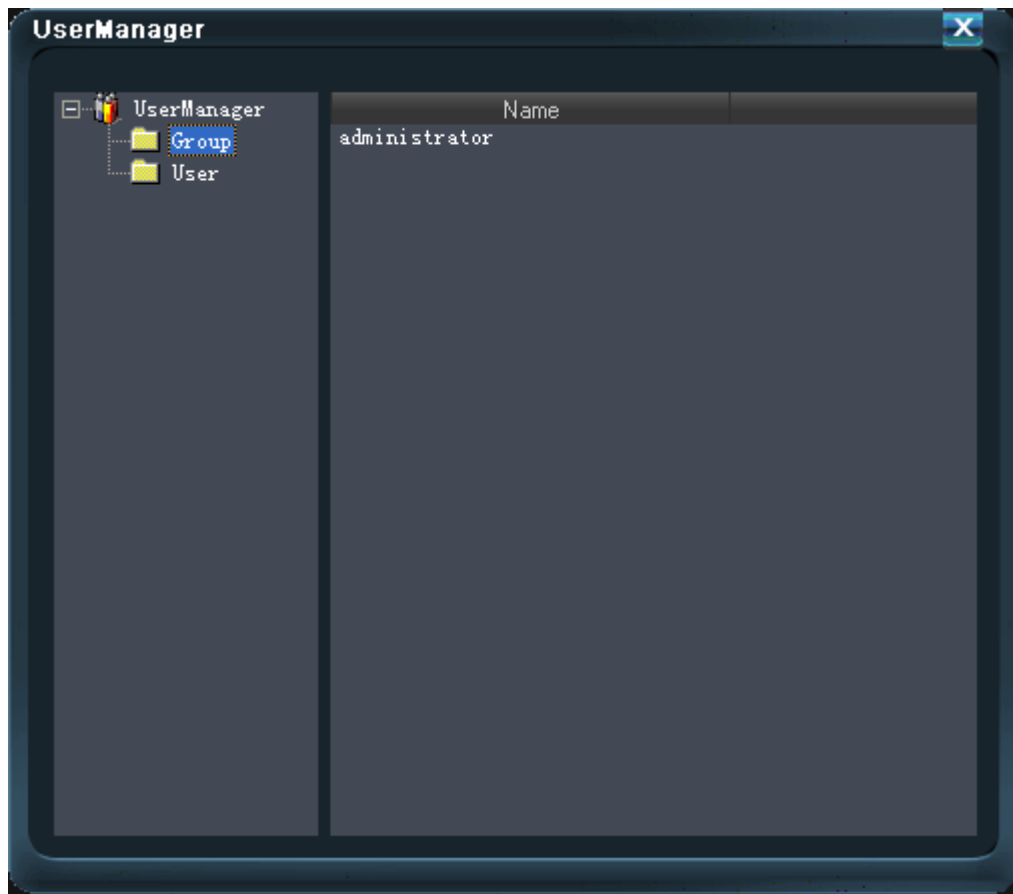
System Setting



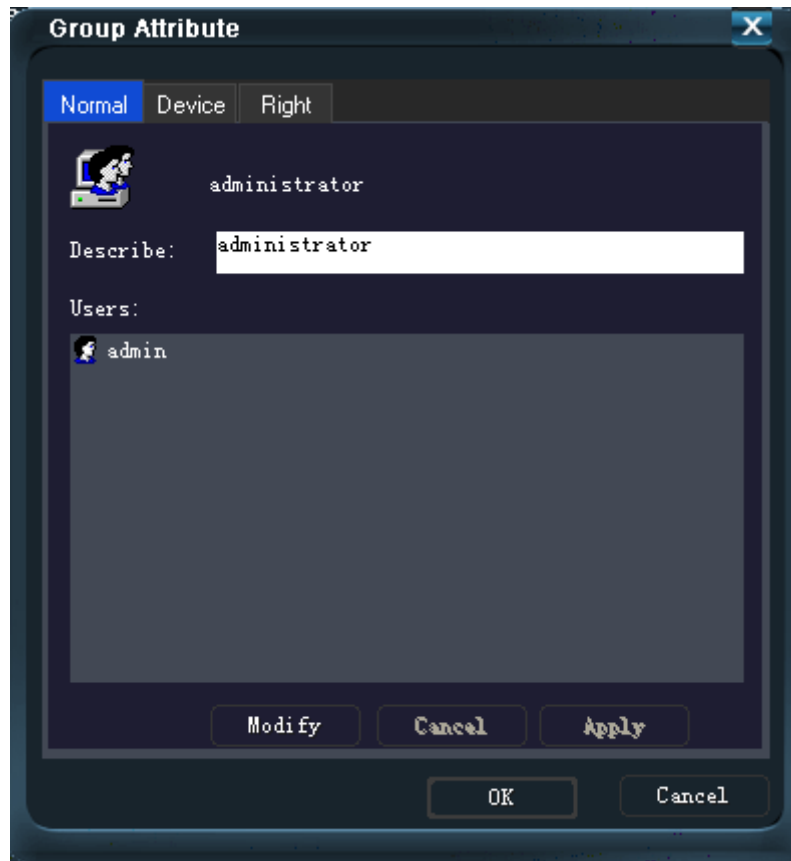
Click  on the main interface, to enter the interface of System Setting.

Functions: User Manager, Local Setting, Alarm Setting and Language.

1. User Manager



Add group or user by right clicking Group or User in the left list box. Left click Group or User in the left list box, the existing groups and users will show in the right box. Delete it by right clicking the group or user. Enter the interface of Group Attribute or User Attribute by double clicking the group or user.



There are three types of Group Attribute: Normal, Device and Right.

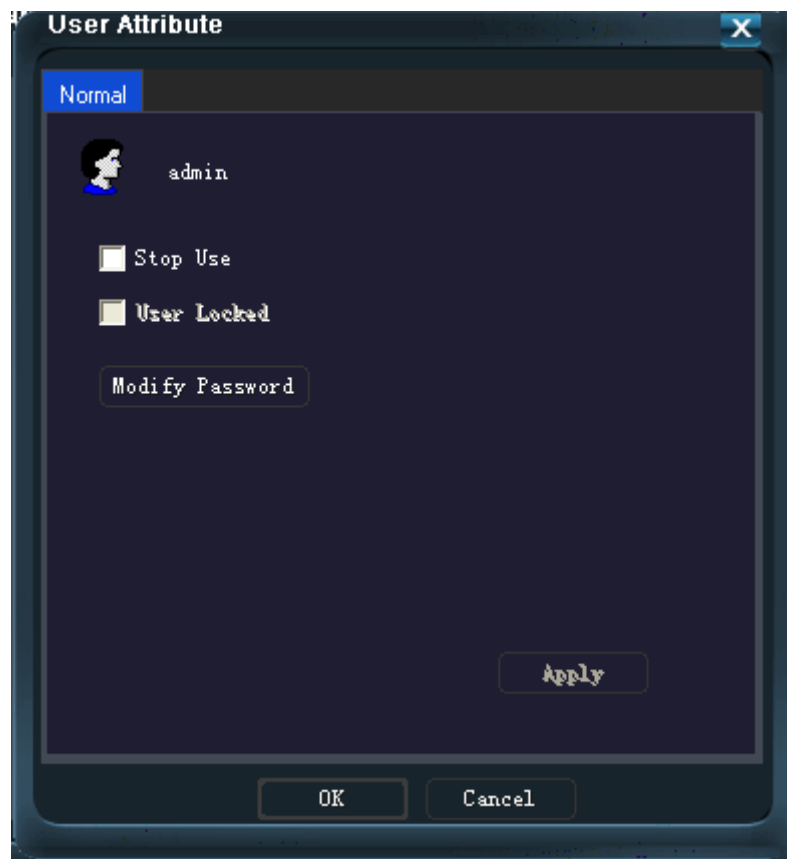
Normal: Describe the group and show Users in the group.

Add or delete users by clicking Modify.

Device: Show the existing device list in the group. Add or delete devices by clicking Modify.

Right: Show the rights of the group. Add or delete rights by clicking Modify.

Note: Only group users can have rights. If users want to have rights, they must belong to some groups. Two users have the same rights, if they are in the same group. To have different rights, they must be in different groups.



This is the interface of User Attribute.

Functions: Stop Use, User Locked and Modify Password.

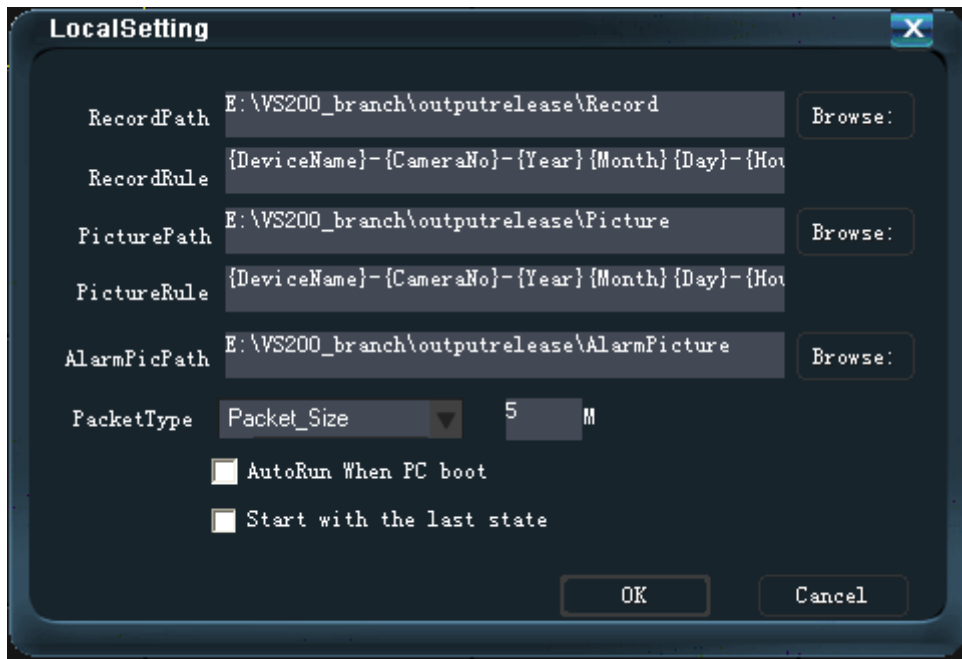
Instruction:

Stop Use: Only users with the right if user management can control some users to stop use directly.

User Locked: If the password is wrong three times when logging in, the user will be locked automatically. Other users with the right can activate the user after being locked.

Modify Password: Users with the right can modify the password after the old password is verified.

2. Local Setting



Local Setting includes functions: Record Path (manual record), Picture Path (captured manually), Alarm Picture Path, and Packet Type etc.

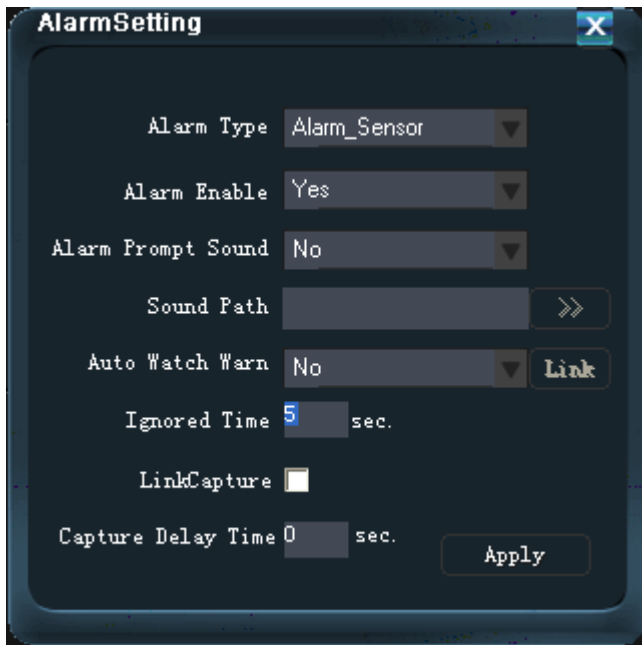
Enable automatic restart: After installation, the default is to automatically start after opening the PC. Users can also choose not to start after booting.

Restore the previous operating state: The program will run in the state too.

Note: Record Path includes 1. Manually recorded files 2. Timeload.

3. Alarm Setting
4. Language

Alarm Setting

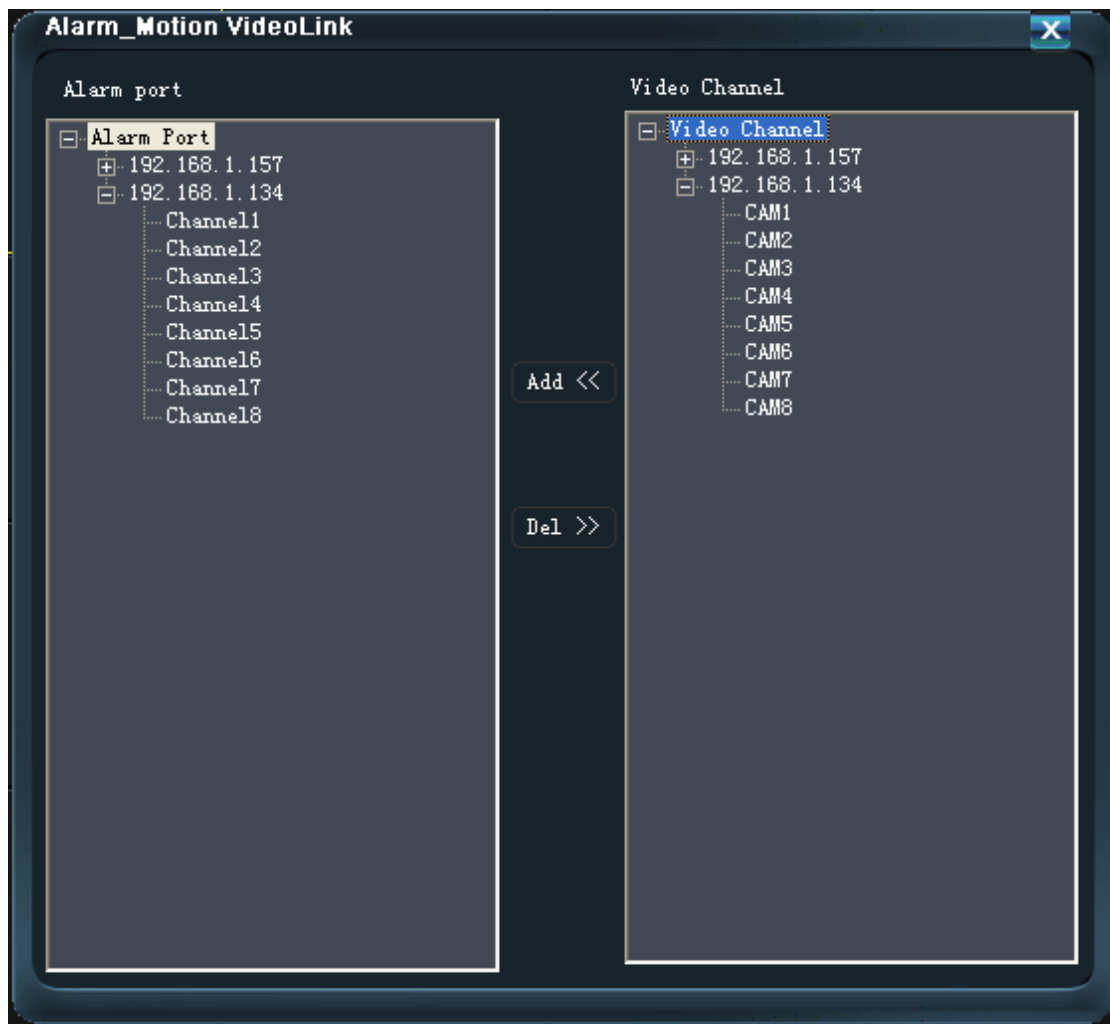


Alarm Setting: Enable Alarm and Alarm Prompt Sound etc.

Link Setting: When the Alarm Type is Sensor or Motion, Link can be set.

Ignored Time: The alarm during this period is regarded as the same one.

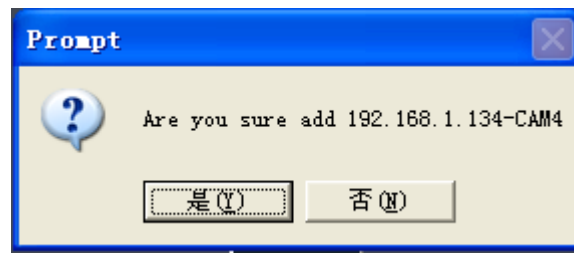
Linkage Capture, Capture Delay Time: After set the linkage program, the link video will be captured in the delay time.



Instruction: The Alarm Port list on the left records the alarm port numbers (external alarm) or the alarm channel numbers (dynamic test).

The Video channel list on the right records the channel numbers of all the devices.

1. Select an Alarm port
2. Select a Video Channel
3. Click Add number, a prompt screen will pop up. Click Yes to add and No to cancel.
4. Multi video channels can be added under the same port number and a video channel can be added to a number of port numbers.
5. Select a port number under a video channel. Click Delete button to delete.



Log

Click the middle bottom on the main interface (Figure 3-2), Real Log information will appear.

There are two types of logs: Alarm log and Operate log.

Type	Date	Time	Device	Channel
Alarm_She...	2010-08-31	12:21:21	192.168.1.134	CAM8
Alarm_She...	2010-08-31	12:21:21	192.168.1.134	CAM7
Alarm_She...	2010-08-31	12:21:21	192.168.1.134	CAM6
Alarm_She...	2010-08-31	12:21:21	192.168.1.134	CAM6
Alarm_She...	2010-08-31	12:21:21	192.168.1.134	CAM5
Alarm_She...	2010-08-31	12:21:21	192.168.1.134	CAM4
Alarm_She...	2010-08-31	12:21:21	192.168.1.134	CAM3
Alarm_She...	2010-08-31	12:21:21	192.168.1.134	CAM2
Alarm_She...	2010-08-31	12:21:21	192.168.1.134	CAM1

Get the information about Alarm log by clicking Search Log, as in the following Figure.

Type	Date	Time	Device	Channel
Alarm_She...	2010-08-31	08:52:47	192.168.1.134	CAM1
Alarm_She...	2010-08-31	08:52:47	192.168.1.134	CAM2
Alarm_She...	2010-08-31	08:52:47	192.168.1.134	CAM3
Alarm_She...	2010-08-31	08:52:47	192.168.1.134	CAM4
Alarm_She...	2010-08-31	08:52:47	192.168.1.134	CAM5
Alarm_She...	2010-08-31	08:52:47	192.168.1.134	CAM6
Alarm_She...	2010-08-31	08:52:47	192.168.1.134	CAM7
Alarm_She...	2010-08-31	08:52:47	192.168.1.134	CAM8
Alarm_She...	2010-08-31	08:53:05	192.168.1.134	CAM1
Alarm_She...	2010-08-31	08:53:05	192.168.1.134	CAM2
Alarm_She...	2010-08-31	08:53:05	192.168.1.134	CAM3
Alarm_She...	2010-08-31	08:53:05	192.168.1.134	CAM4
Alarm_She...	2010-08-31	08:53:05	192.168.1.134	CAM5
Alarm_She...	2010-08-31	08:53:05	192.168.1.134	CAM6
Alarm_She...	2010-08-31	08:53:05	192.168.1.134	CAM7
Alarm_She...	2010-08-31	08:53:05	192.168.1.134	CAM8
Alarm_She...	2010-08-31	08:53:06	192.168.1.134	CAM7
Alarm_She...	2010-08-31	08:53:07	192.168.1.134	CAM1
Alarm_She...	2010-08-31	08:53:07	192.168.1.134	CAM3
Alarm_She...	2010-08-31	08:53:07	192.168.1.134	CAM4
Alarm_She...	2010-08-31	08:53:07	192.168.1.134	CAM7
Alarm_She...	2010-08-31	08:53:07	192.168.1.134	CAM8
Alarm_She...	2010-08-31	08:53:07	192.168.1.134	CAM7

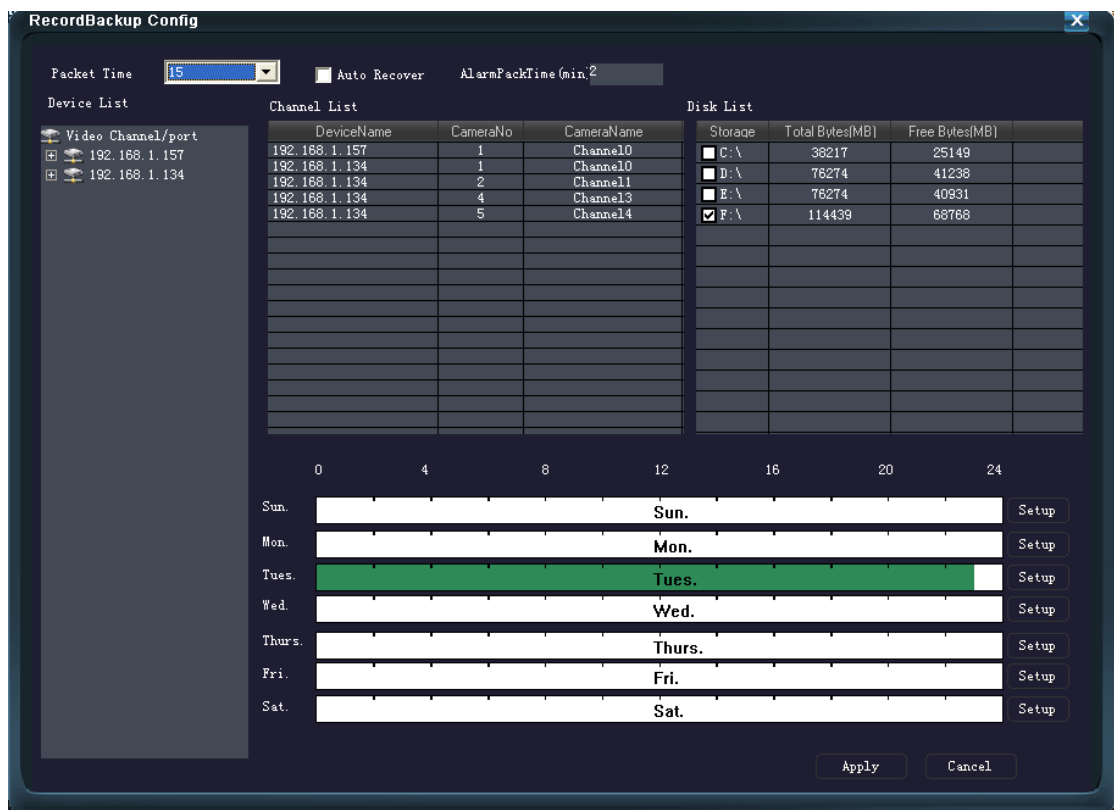
Backup



Click **BackupSet** on the main interface, to display Record Backup Configuration.

If there is backup of the original setting, real-time backup will be started.

Click "Config" to enter the interface of configuration.



Options:

Packet Time (15, 30, 45, 60) minutes

Auto Recover (automatically covered when the HDD is full.)

Alarm Pack Time.

Channel List (drag the device from the left Device List to the Channel List)

Disk List (Which Disk of PC do you select to store the record?)

Time periods are set in weeks and everyday is divided into six periods. The result will be displayed in graphics.

After configuration, you can select “Start Real-time Backup”.

Note: If you want to start real-time backup, the user name of the current device must be reusable, or it cannot be backed up.

After starting the Main program, the existing backup program will be started if there is backup configuration.

Time	DeviceName	CameraNo	Describe
08-31-11:53:39	192.168.1.134	5	Start Backup
08-31-11:53:39	192.168.1.134	4	Start Backup
08-31-11:53:39	192.168.1.134	2	Start Backup
08-31-11:53:39	192.168.1.134	1	Start Backup
08-31-11:53:39	192.168.1.157	1	Start Backup

Storage	Total Bytes(MB)	Used Bytes(MB)	Free Bytes(MB)	[%]Free
C:\	38217	13066	25151	% 65
D:\	76274	35036	41238	% 54
E:\	76274	35343	40931	% 53
F:\	114439	45651	68788	% 60

To show the backup information and the status of the current PC HDD.