

# **Mobile Surveillance User Manual for Android**

---

## Index

<b>1. System Introduction.....</b>	<b>3</b>
<b>1.1. Overview .....</b>	<b>3</b>
<b>1.2. Operating Environment .....</b>	<b>3</b>
<b>2. Operation Instruction.....</b>	<b>3</b>
<b>2.1. Install / Uninstall.....</b>	<b>3</b>
<b>2.1.1. Install.....</b>	<b>3</b>
<b>2.1.2. Uninstall.....</b>	<b>3</b>
<b>3. DVR Setting.....</b>	<b>4</b>
<b>3.1. Code setup.....</b>	<b>4</b>
<b>3.2. User Account .....</b>	<b>5</b>
<b>4. Software Operation.....</b>	<b>5</b>
<b>4.1. Network Setting.....</b>	<b>6</b>
<b>4.2. Login.....</b>	<b>7</b>
<b>7.1. Video Browsing .....</b>	<b>9</b>
<b>7.2. Video Channel .....</b>	<b>10</b>
<b>7.3. Exit .....</b>	<b>11</b>

## 1. System Introduction

### 1.1. Overview

Main functions:

- Real time video viewing from Mobile device
- PTZ control for device with PTZ function

### 1.2. Operating Environment

- Support mobile operation system for Android 1.5or higher
- Enable the Sub Stream on the linked device
- H264 compression

## 2. Operation Instruction

### 2.1. Install / Uninstall

#### 2.1.1. Install


Please refer to the mobile phone device User Manual on how to install the software

Step1: Download the mobile phone synchronization software "HTCSync.exe ", and install to your computer

Step2: Connect the phone to a computer

Step3:



Double click the icon  , applied VS500 to the phone

#### 2.1.2. Uninstall

Open: Menu→Settings→Applications→Manage applications →VS500, Select “Uninstall”。

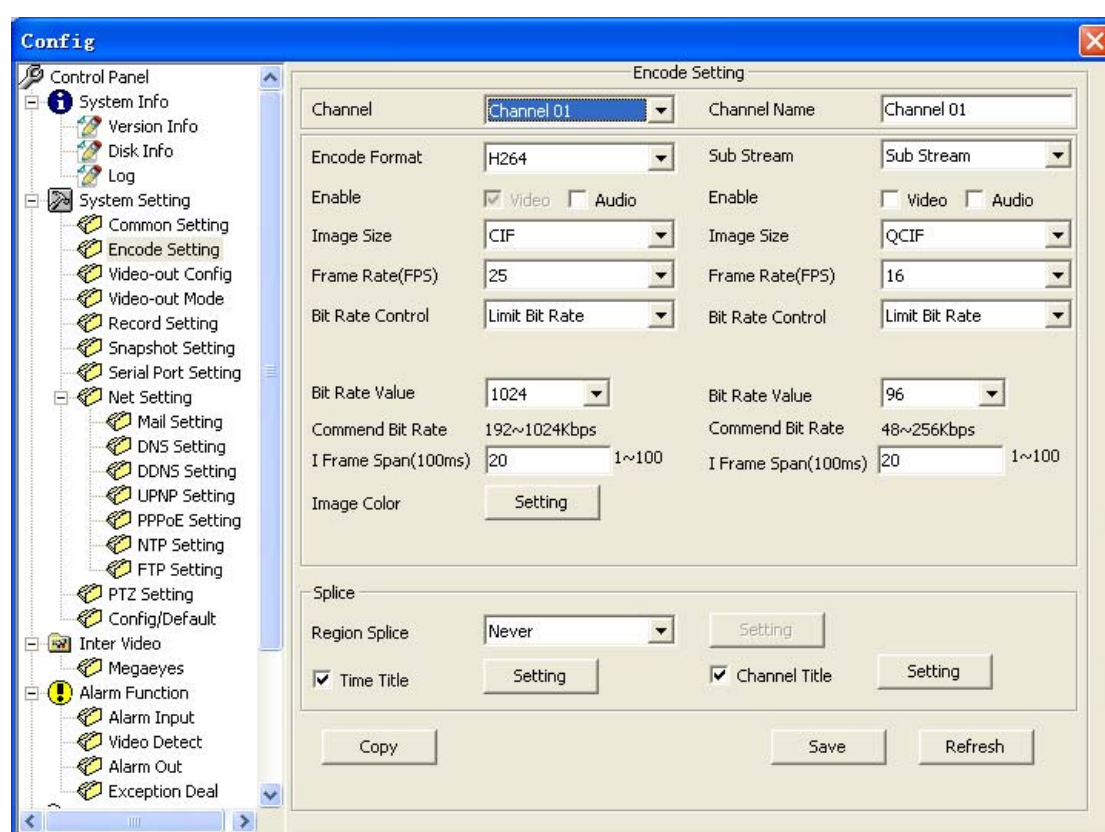
### 3. DVR Setting

Set up the encoding system to accommodate mobile phone surveillance. (The mobile phone's streaming quality is proportional to network quality).

Setup can be completed by WEB log-in or DVR setup. The following instruction is for DVR setup.

Note: To ensure that mobile viewer won't affect the video quality of your DVR, only sub stream is used by the mobile phone.

#### 3.1. Code setup



EncodeSetting Interface

1、 Select Sub stream

2、 Setting as :

Resolution: CIF / QCIF;

Frame Rate (Fps): CIF: 5-8 fps; QCIF: 8-16 fps

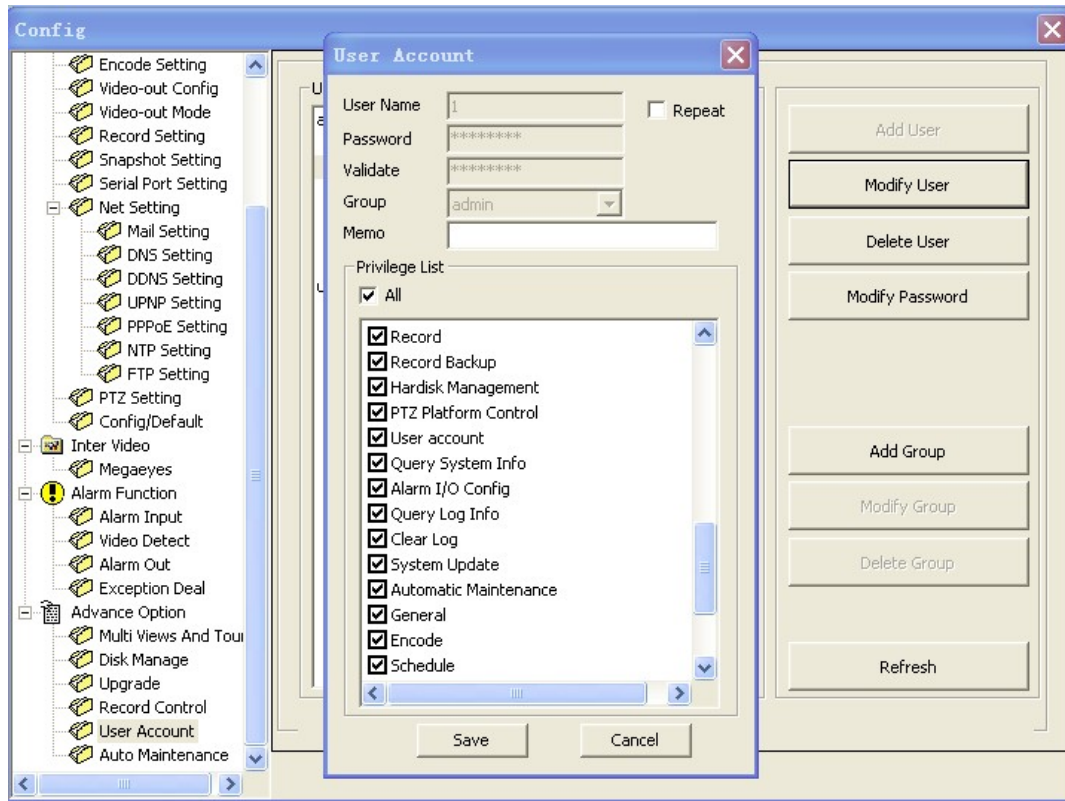
Bit Rate Type: CBR

Bit Rate: 64-256Kb/S

**Note:** The performance of your mobile phone and your network status can directly affect the quality of your video. Reducing the Sub-Stream Frame Rate can greatly

improve on your video quality.

### 3.2. User Account

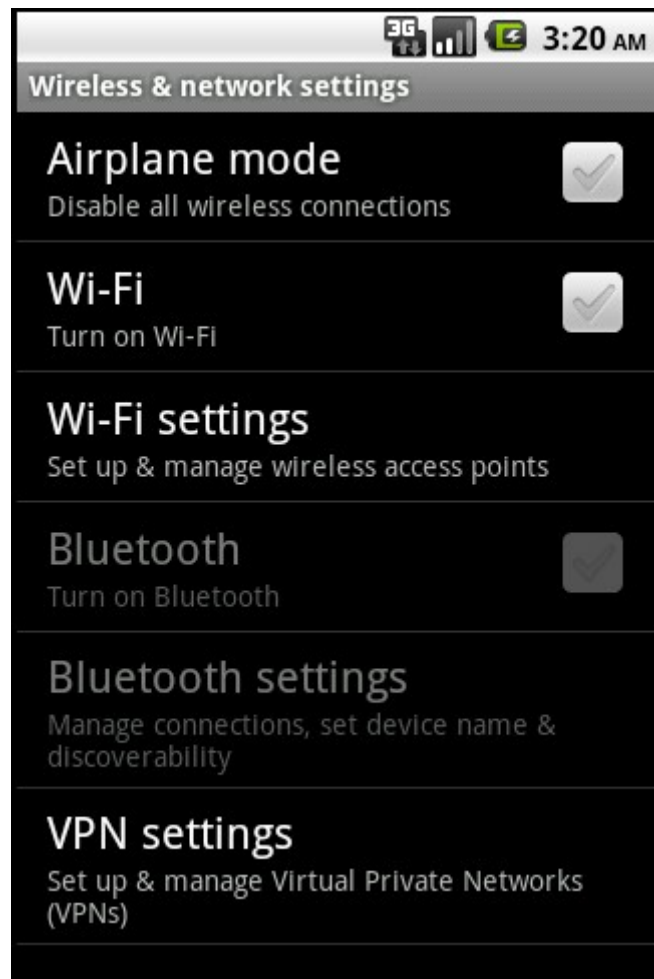


User Account Interface

- 1、 Set LoginUser is"Repeat"
- 2、 Set PTZ is enable

### 4. Software Operation

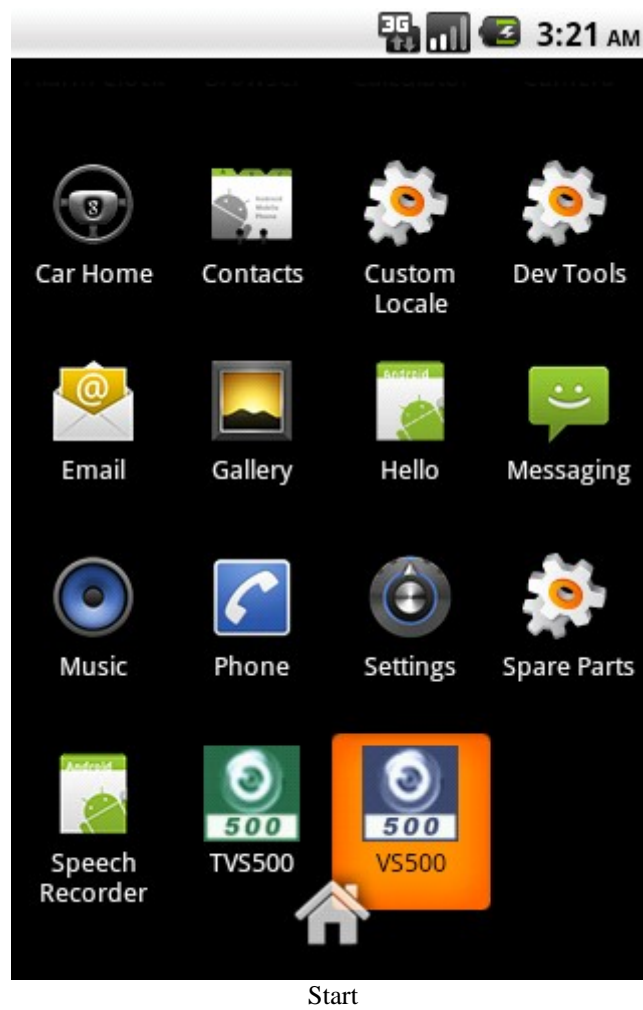
## 4.1. Network Setting



Network Setting

Select: Menu→Set→Wireless & network settings. Please refer to the mobile phone user manual or contact your network operator

## 4.2. Login



Select: Menu→VS500 to run the program, then login.

VS500 1.00.1

Device IP: 0.0.0.0

Device port: 34567

User name: admin

Password: ••••••

Login Exit

Login

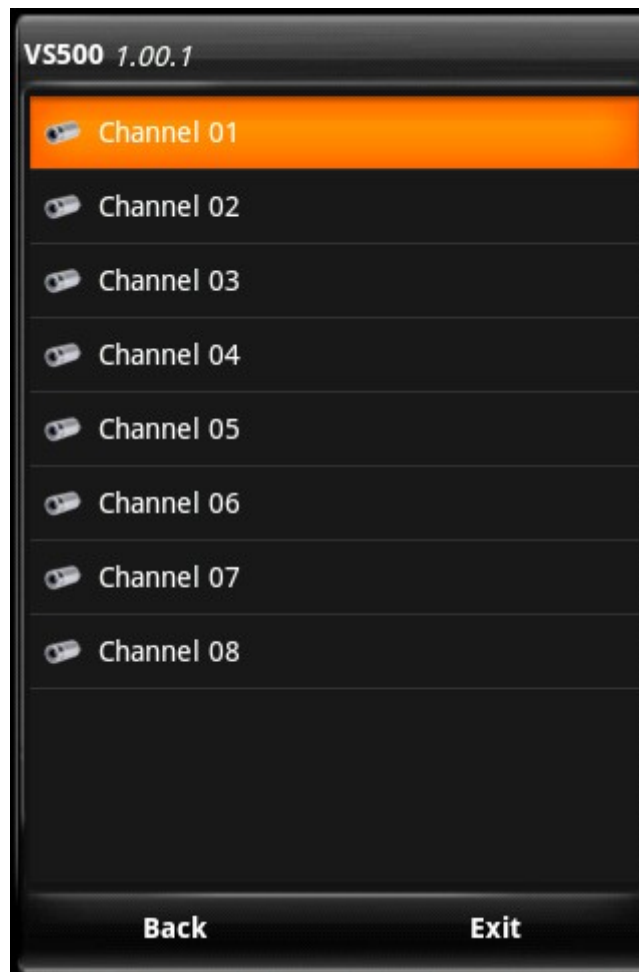
Input device IP, port number, user name and password, click Login. After successful login, enter the video selection interface. System will record the last logged IP and other information, easy for login next time

**Problems may occurred**

5. Please check input information is correct
6. Please check the network connection
7. The equipment is running properly



## 7.1. Video Browsing



Video

### **Button:**

Return: back to system interface, close all the video channel

Exit: exit the system

### **Open the video channel**

Click the video channel by direction key or touch screen

Open the video channel and into the system interface

## 7.2. Video Channel



Video

### Button


**Video:** Switch to Video channel

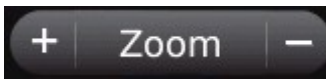
**FullScreen:** Switch to full screen when video browsing

**About:** View Software version et

**Exit:** Exit program

### PTZ Control:

Click  "up / down" and "left / right" switch in both directions, left and right button for command operation

Click  "Zoom in / out" and "iris + / -", "Focus + / -" left and right button for command operation

## **Full screen instructions**

Click the video window or click the full screen button to switch to full-screen interface, click the video window again to return

In full screen mode, the arrow keys can control PTZ

### **7.3. Exit**

Press the Exit key to exit the system.

◦