

Mobile Surveillance User Manual for iPhone

Index

1. System Introduction.....	3
1.1. Overview	3
1.2. Operating Environment	3
2. Operation Instruction.....	3
2.1. Install / Uninstall.....	3
2.1.1. Install.....	3
2.1.2. Uninstall.....	3
3. DVR Setting.....	4
3.1. Code setup.....	4
3.2. User Account	5
4. Software Operation.....	5
4.1. Network Setting.....	5
4.2. Login.....	6
4.3. Video Browsing	8
4.4. Video Channel	9
4.5. Exit	10

1. System Introduction

1.1. Overview

Main functions:

- Real time video viewing from Mobile device
- PTZ control for device with PTZ function

1.2. Operating Environment

- Support mobile operation system for iPhone 3.1.2 or higher
- Enable the Sub Stream on the linked device
- H264 compression

2. Operation Instruction

2.1. Install / Uninstall

2.1.1. Install

Please refer to the mobile phone device User Manual on how to install the software

Step1: Download the mobile phone synchronization software "iTunes.exe", and install to your computer

Step2: Connect the phone to a computer

Step3:



Double click the icon `vs500.app.ipa` , applied VS500 to the phone

2.1.2. Uninstall

Touch the VS500 icon for a short time, when the icon shaking and appears x symbol ,

click to remove.

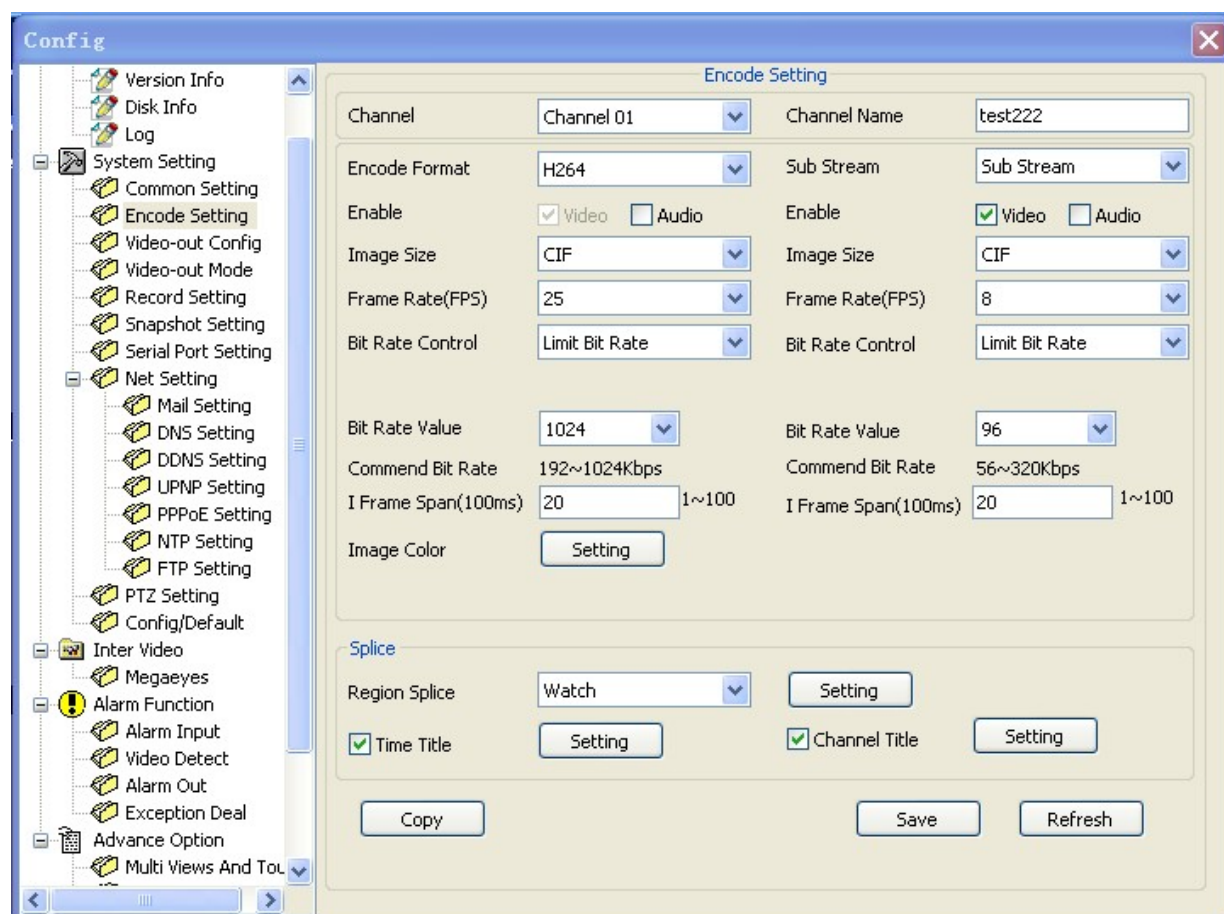
3. DVR Setting

Set up the encoding system to accommodate mobile phone surveillance. (The mobile phone's streaming quality is proportional to network quality).

Setup can be completed by WEB log-in or DVR setup. The following instruction is for DVR setup.

Note: To ensure that mobile viewer won't affect the video quality of your DVR, only sub stream is used by the mobile phone.

3.1. Code setup



EncodeSetting Interface

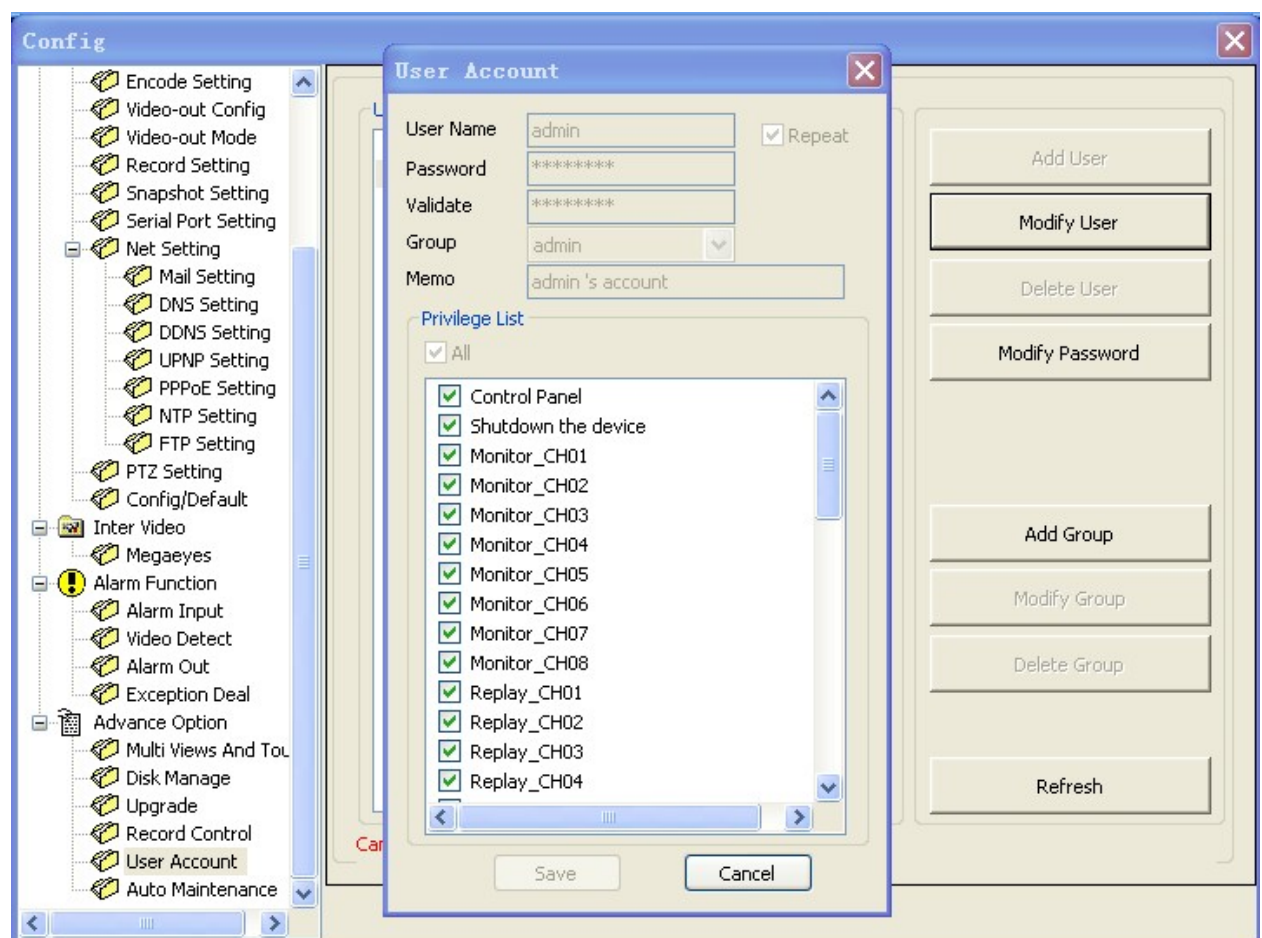
- 1、 Select Sub stream
- 2、 Setting as :
Resolution: CIF / QCIF;
Frame Rate (Fps): CIF: 5-8 fps; QCIF: 8-16 fps

Bit Rate Type: CBR

Bit Rate: 64-256Kb/S

Note: The performance of your mobile phone and your network status can directly affect the quality of your video. Reducing the Sub-Stream Frame Rate can greatly improve on your video quality.

3.2. User Account



User Account Interface

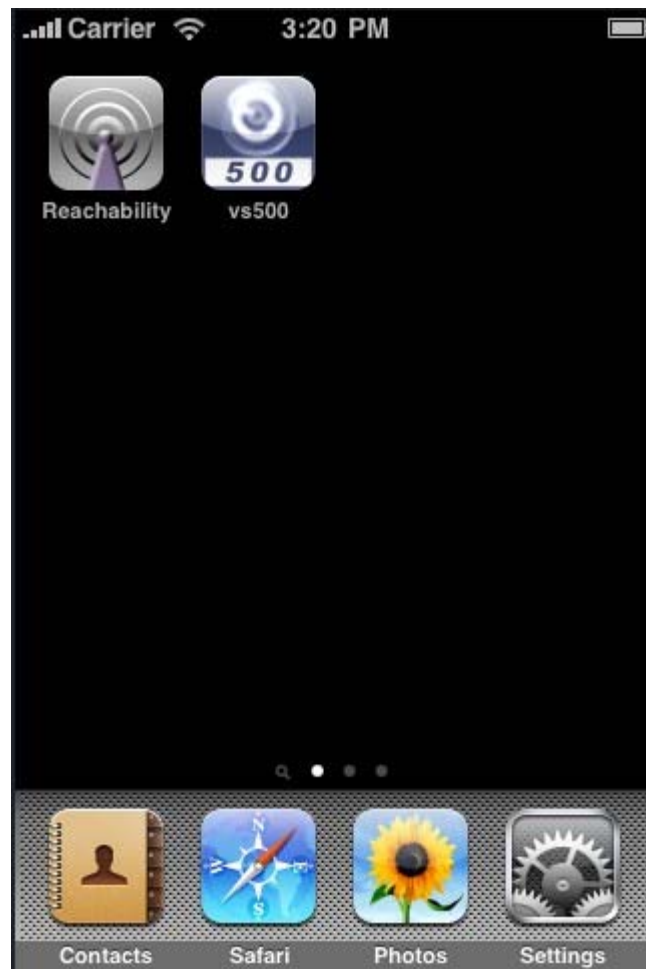
- 1、 Set LoginUser is "Repeat"
- 2、 Set PTZ is enable

4. Software Operation

4.1. Network Setting

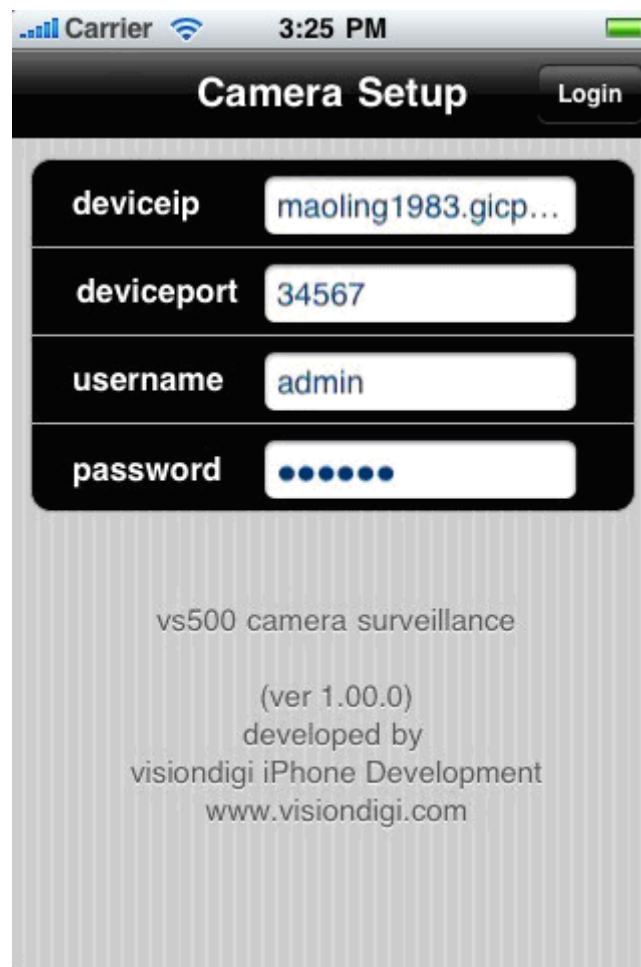
Please refer to the mobile phone user manual or contact your network operator

4.2. Login



Start

Select VS500 to run the program, then login



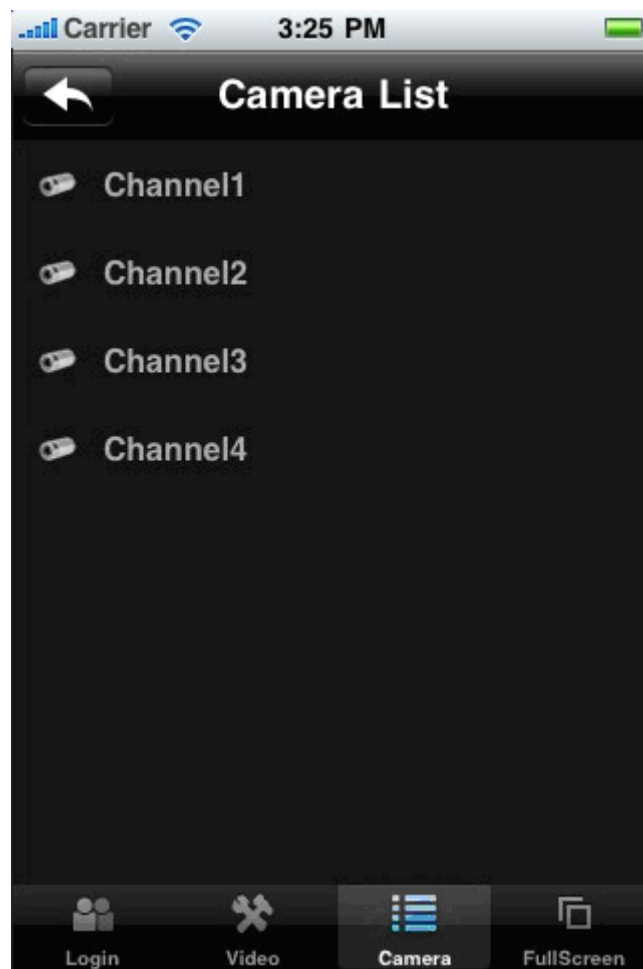
Login

Input device IP, port number, user name and password, click Login. After successful login, enter the video selection interface. System will record the last logged IP and other information, easy for login next time

Problems may occurred

- Please check input information is correct
- Please check the network connection
- The equipment is running properly

4.3. Video Browsing



Video browse Interface

Button:

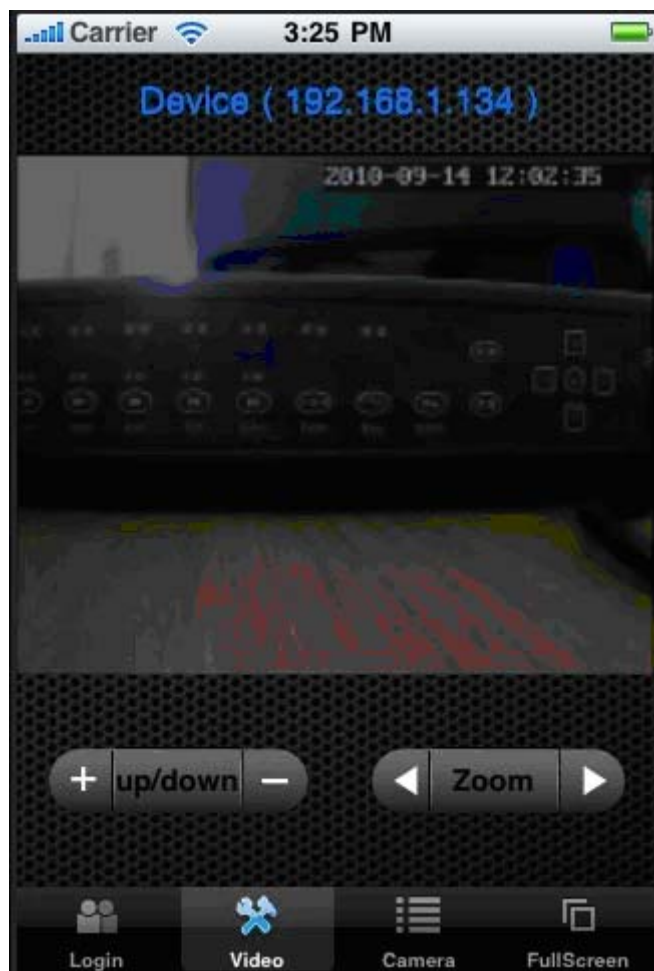
Return: back to system interface, close all the video channel

Open the video channel

Click Click the video channel by direction key or touch screen

Open the video channel and into the system interface.

4.4. Video Channel



Video channel

Button:

Login: Switch to Login

Video: Switch to Video channel

Camera: Switch to Camera List

FullScreen: Switch to full screen when video browsing

PTZ Control:

Click **up/down** "up / down" and "left / right" switch in both directions, left and right button for command operation

Click **Zoom** "Zoom in / out" and "iris + / - ", "Focus + / -" left and right button for command operation

Full screen instructions

Click the video window or click the full screen button to switch to full-screen interface, click the video window again to return

4.5. Exit

Press the Home to exit the system.