

Mobile Surveillance User Manual for Windows Mobile

1. System Introduction

1.1. Overview

Main functions:

- Real time video viewing from Mobile device
- PTZ control for device with PTZ function;

1.2. Operating Environment

- Support mobile operation system for Windows Mobile 5.0 or higher
- Enable the Sub Stream on the linked device
- H264 compression

2. Operation Instruction

2.1. Install / Uninstall

2.1.1. Install

Mobile Monitor "VS500.cab, copied to the phone (using PC synchronization software). Click Programs, and follow the installation wizard to complete installation.

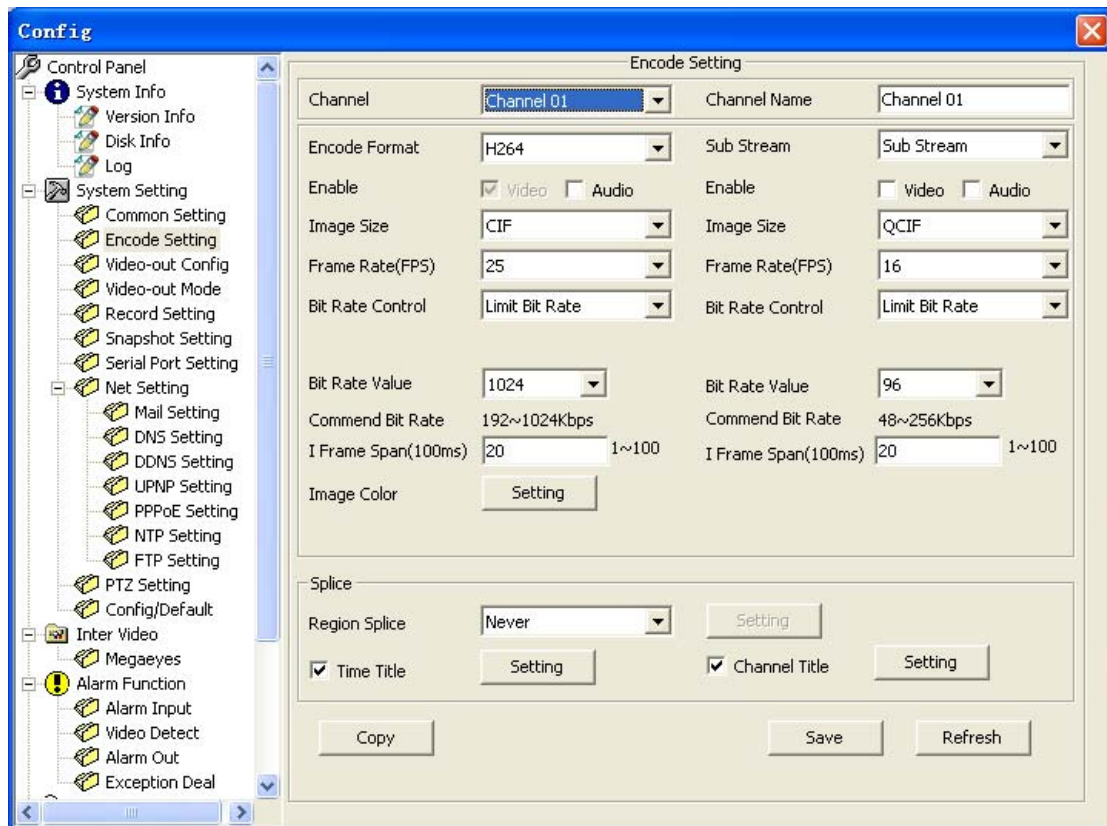


Figure 2.2 Installation Diagram



Figure 2.3 Schematic diagram of the installation is complete

2.2. Code setup



Encoding setup interface

1、 Select Sub stream

2、 Setting as :

Resolution: CIF / QCIF;

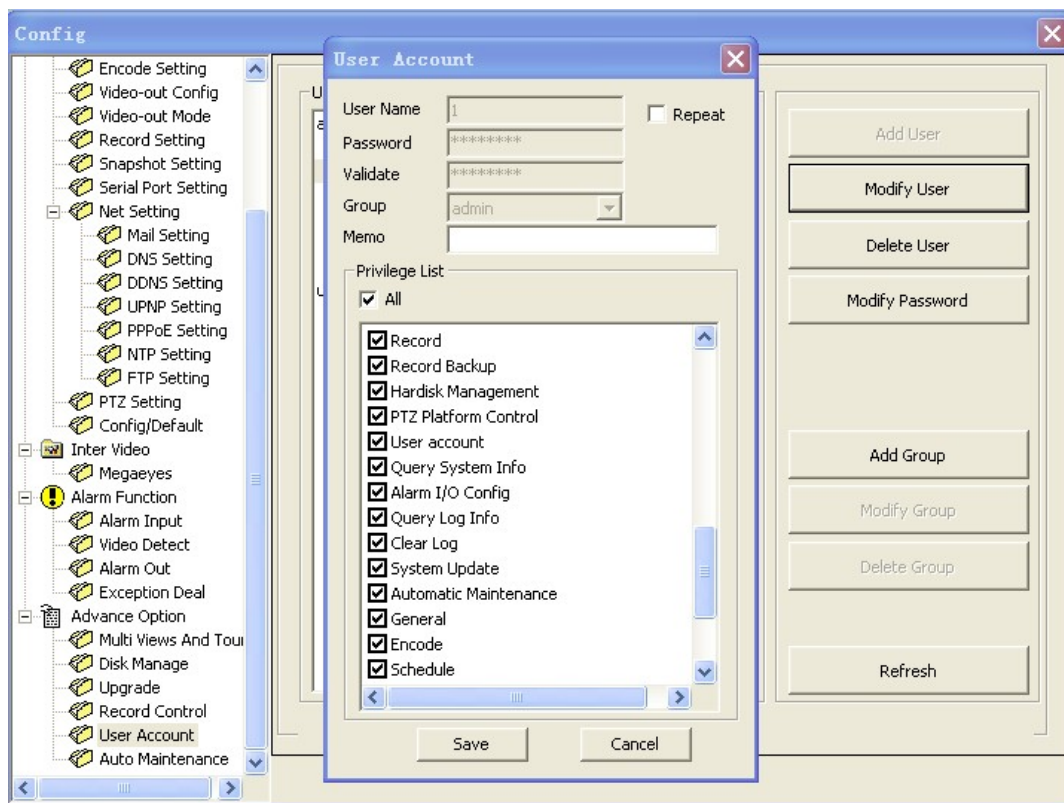
Frame Rate (Fps): CIF: 5-8 fps; QCIF: 8-16 fps

Bit Rate Type: CBR

Bit Rate: 64-256Kb/S

Note: The performance of your mobile phone and your network status can directly affect the quality of your video. Reducing the Sub-Stream Frame Rate can greatly improve on your video quality.

2.3. User Account



User Account setup interface

1、 Software Operation



Select “Start->Programs”, click the **VS500** icon, to run the program, then login.



Figure 3.2.1 shortcut to the program

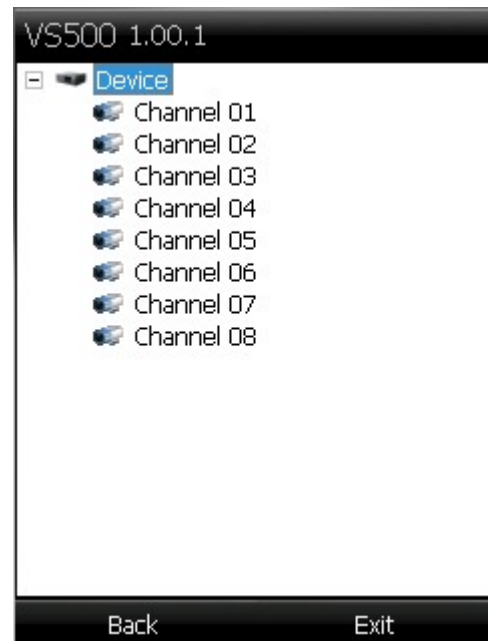


Figure 3.2.2 Interface program starts

1.1. Login

Input device IP, port number, user name and password, click Login. After successful login, enter the video selection interface. System will record the last logged IP and other information, easy for login next time

Problems may occurred

- Please check input information is correct
- Please check the network connection
- The equipment is running properly

:



Figure 3.3.1 login screen map

1.2. Video Browsing

After logging in, click the button in Figure 3.4.1, you can view the device's channel list. In the channel list tree, click the device name, you can open a video source, video browsing.

Browsing, by clicking the video window or click the button in Figure 3.4.2 to achieve full-screen view. Full screen, click the video window to exit full screen display.

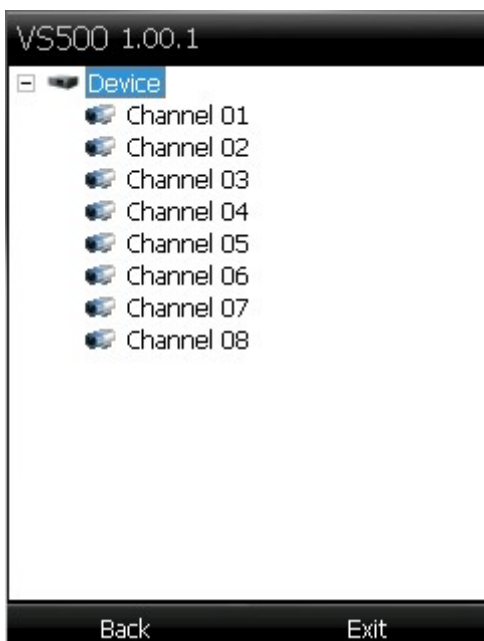


Figure 3.4.1 Channel list

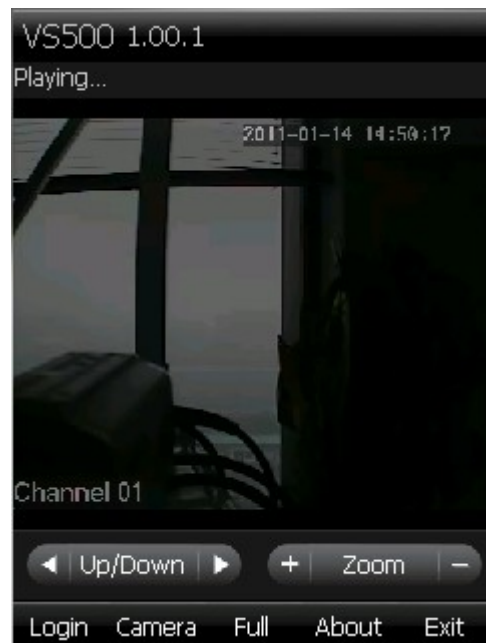


Figure 3.4.2 View Video

1.3. PTZ Control:

If the channel has PTZ functionality, you can control the PTZ. Direction through the cell phone that can operate the keyboard. PTZ control panel can also be done PTZ control.

1.4. Exit

Click the button in red area to exit the system