

Mobile Surveillance

User Manual

Contents

1.1 Network Configuration	3
1.2 By Phones with iPhone OS	3
1.3 By Phones with Android OS	13
1.4 By Phones with Blackberry OS.....	18
1.5 By Phones With Windows Mobile OS	21

Mobile Surveillance

This DVR supports mobile surveillance by phones with iPhone, Blackberry, Android or Windows mobile OS. At the same time, it supports 3G network.

1.1 Network Configuration

● Access device via LAN

Step 1: Connect device via wireless router. Then checkmark DHCP both in router and device to automatically acquire IP address or enter the IP address manually. Please enter Main Menu→Information→Network tab to see the IP address.

Step 2: Use WIFI function in your mobile phone to connect the wireless router.

Note: Make sure your phone network and device network are in the same network segment on LAN.

Step 3: Add the IP address and port in the mobile phone surveillance client.

● Access device via 3G network

Step 1: Set the device network. Please enter Main Menu→Setup→Network tab.

- ▶ If you use PPPoE to connect device, please enable PPPoE and input username and password received from you ISP in network tab. Then click “Apply”. You can enter Main Menu→Information→Network tab to see the IP address. If you want to utilize dynamic domain name, please apply for a domain name in a DNS server supported by the device.
- ▶ If you have a static WAN IP address, please enter Main Menu→Setup→Network tab to input your IP address, gateway and port.
- ▶ If you use LAN IP address, please enter Main Menu→Setup→Network tab to input your IP address, gateway and port and then forward IP address and port number in virtual server setup of the router or virtual server(If you has enabled the UPnP function in both the device and router, you can skip this step). Port forwarding setting may be different in different routers and servers. Please refer to the router’s manual for details. After you forward your LAN IP address and port, please check the WAN IP address in the router or server.

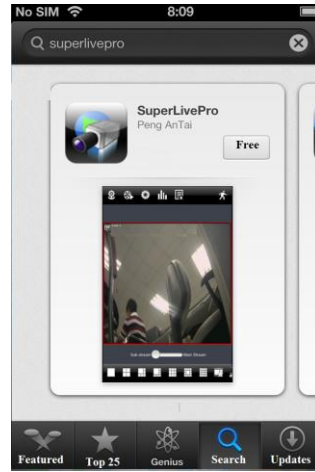
Step 2: Add the WAN IP address or domain name in mobile phone surveillance client.

1.2 By Phones with iPhone OS

◆ Install software by iPhone/iPad

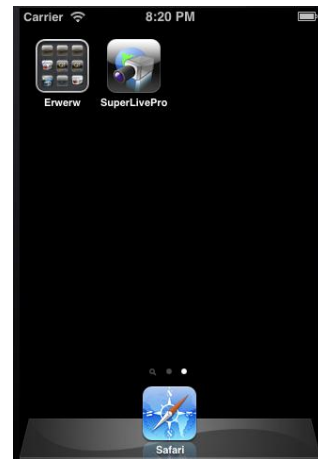
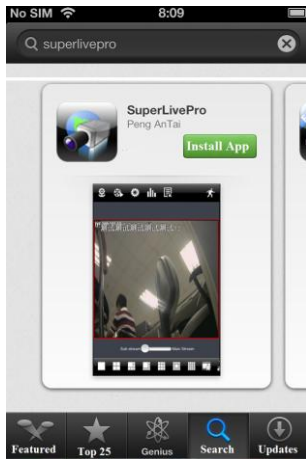
Step 1: Open App Store software as shown in the figure on the left.

Step 2: Search “SuperLive Pro” and click “Free” button as shown in the figure on the right.



Step 4: Click “Install App” button as shown in the figure on the left.

Step 5: Input iTunes Store password and then click “OK”. The software will be installed automatically.



◆ Install Software through PC

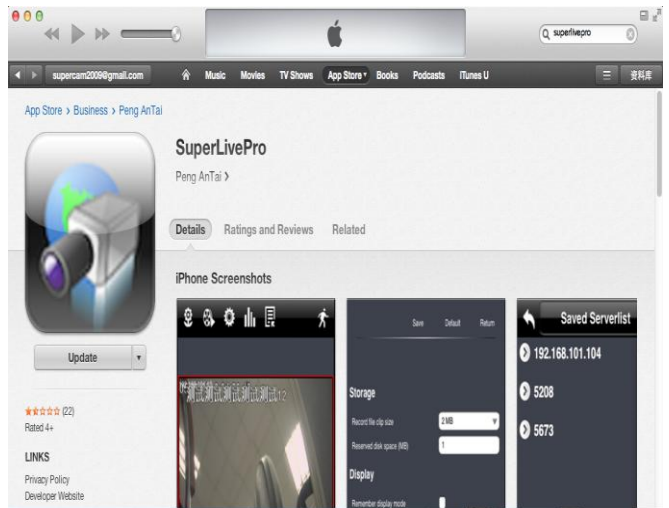
Step 1: Install iTunes store in PC and then login.

Step 2: Connect iPhone and PC.



Step 3: Search “SuperLivePro” and select it.

Step 4: Click “Download” button.



Step 5: Input username and password.

Step 6: Synchronously apply SuperLivePro software to iPhone/iPad.



◆ SuperLivePro Instruction

Login




Step 1: Choose network. There are two network connection ways:

3G/3G +WIFI, well video quality. This network supports main stream in single channel playing and sub stream.

The real-time image will be displayed by using sub stream.

3G-, poor video quality contrast to the above mentioned network.

Step 2: Click Login. Then click  button to add device name, IP address, Port, username and password.

Step 3: In the live interface, choose one channel and click to pop up the server list. Then unfold the channel and choose a channel to display the live image.

Live



There are many buttons in live interface, such as, screen mode, favorite channel, snap, record, open/close audio, talk, PTZ., etc.



: Image view button. The pictures snapped in the live will be checked by clicking this button. You will view these pictures in this interface.



: Playback button. Click this button to enter into playback interface.



: Settings button. Click this button to set local configuration (Some can also support remote configuration).



: Information button. Click this button to check lots of information including local information, device information, network information, etc.



: Server list edition button. Click this button to add server list.



: Log off button. Click this button to return to the login interface.



: Screen mode button. You can choose 1 , 4 , 6 , 8 , 9 , 13 or 16 screen display mode.



: Favorite channel display button. If you save your favorite channel in the list, clicking this button will directly play all favorite channels you have saved.



- : Multiple channel choice button. You can select multiple devices at the same time and let multiple channels to play simultaneously (The channels can not exceed the maximum number of the current screen display mode).



: Snap button. Choose the channel and click this button to capture the channel image.



: Local record button. Choose the channel and click this button to start recording.



: Open/Close audio. Choose the channel and click this button to open/close the audio of this channel.



: Open/Close talk. Click this button to pop up the servers which support talk function. Select the device to start talking.



: Set video parameter button. Select the channel and click this button to set the video parameters including brightness, hue, saturation and contrast.



: PTZ button. Click this button to pop up PTZ control panel.



: Stream switch button. If “3G/3G+/WIFI” network mode is selected, you can switch between sub stream and main stream when only the single channel is playing.

Other operation :

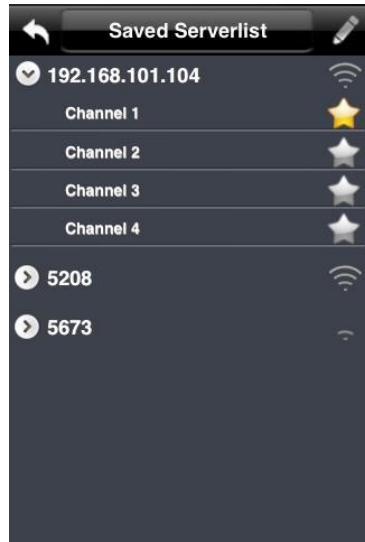
When the single channel is playing, the channel can be switched by swiping your finger left and right.

When the single channel is playing, you can zoom in/out the image by swiping you finger up and down

Server list

You can simultaneously connect 20 devices at most and there is a demo address for user test.

1) Saved Server List interface A



When there is no any video information playing for the channel in the live interface, click this channel to enter the above-mentioned interface.

Where there is video displaying for the channel in the live interface, long press this channel to enter the above-mentioned interface.



: Return button. Click this button to return to the current interface.



: The current server list name. Click this button to switch between saved server list and favorite server list.



: Edit button. Click this button to enter edit list.



: It indicates a device. the device channel will unfold by clicking the device name.

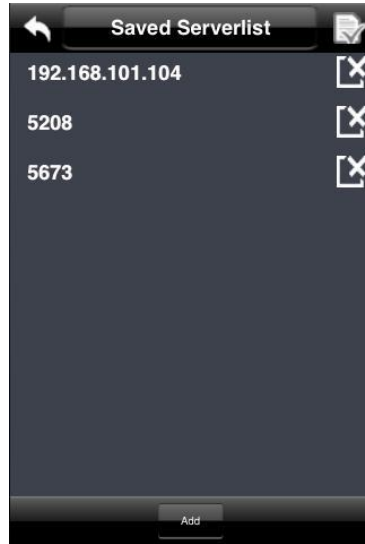


: It shows connection status.  means the device has been connected.  means the devices is connecting.  means the device is not connected.



: Color means the device has been saved in favorite server list. Gray means the device has not been saved in favorite server list.

2) Saved Server List interface B



Click edition button to enter the above-mentioned interface.



: Finish button. After you finish editing, click this button to return to the saved server list interface.

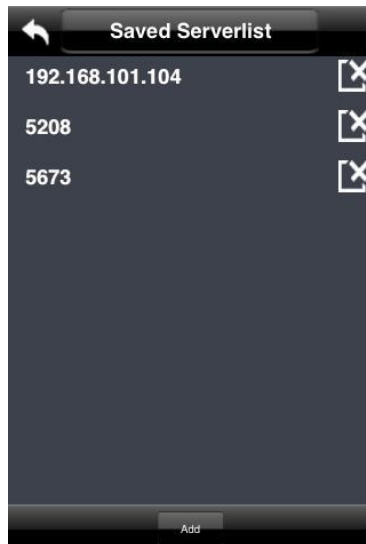



: Delete button. Delete the device. If this device has been added to favorite server list, deleting it here will also be deleted in the favorite server list.



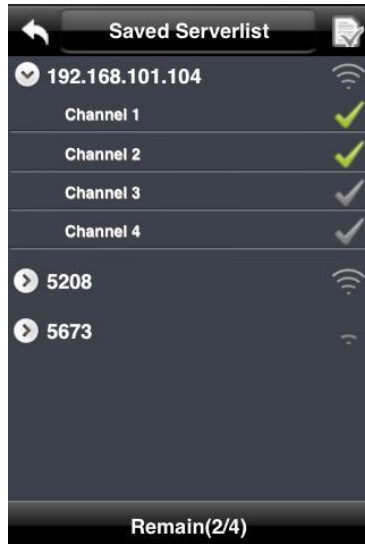
: Add button. Add a new device.


3) Saved Server list interface C




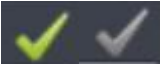
Click  button in the live interface to enter the above-mentioned interface.


4) Multiple Channel Choice Interface



Click  button to enter the above-mentioned interface.

 : Click this button to return to the live interface and play the selected channel image.

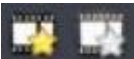
 : Selection button. Click the grey button to change it into color. The color button means the channel is selected to play.


 : The front number means you have already selected two channels to play. The number after two means you can choose 4 channels at most.

5) Favorite Server List A



Click Saved Server list button to enter favorite server list interface.

 : Color means the channel has been selected. Gray means the channel hasn't been selected.

Click  button on the live interface to play the selected favorite channels. You can select 16 channels to play at one time.

6) Favorite Server List B



Click the edition button in the favorite server list to enter the above-mentioned interface.



: Click this button to delete the favorite device. The favorite channels under this server name will also be deleted.



: Delete the favorite channel.

7) Favorite Server List C




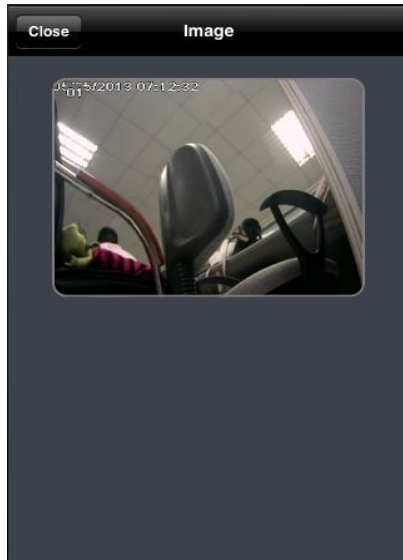
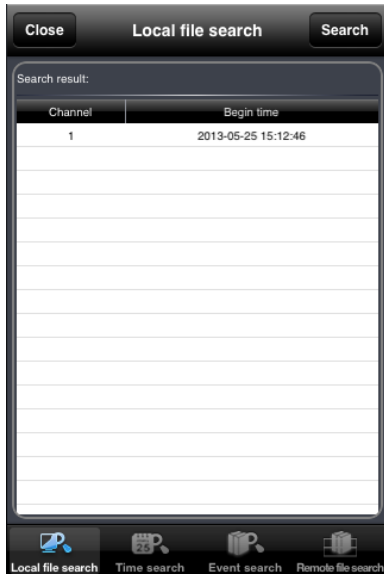
Click  button in the live interface to enter saved server list interface. Then click saved server list button to switch to the above-mentioned interface.

Image View

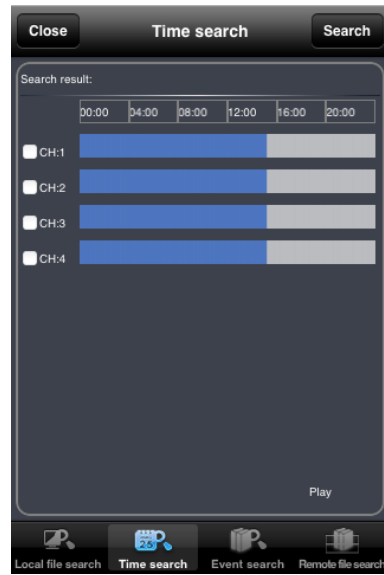
View the snapping pictures.



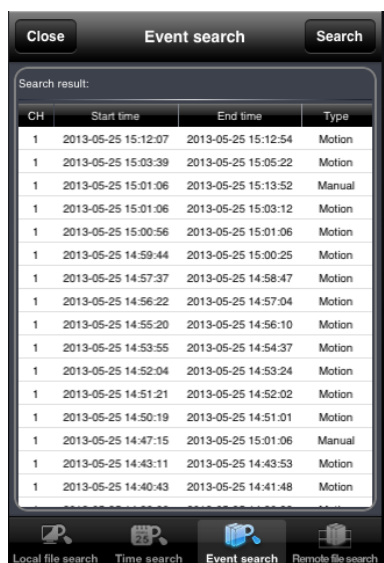
Playback Interface



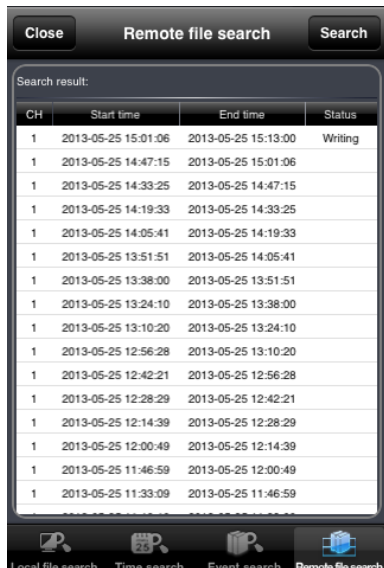
(Fig 1)



(Fig 2)



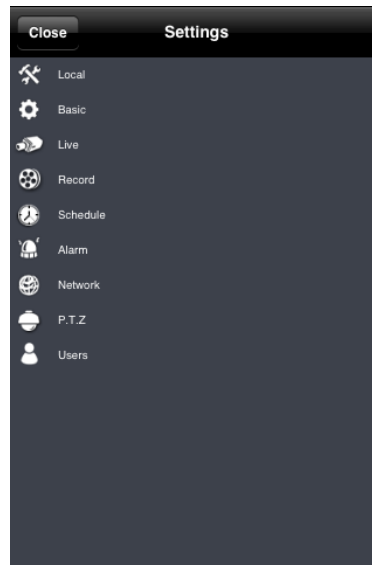
(Fig 3)



(Fig 4)

Fig 1 is local playback; Fig 2 is remote playback by time search; Fig 3 is remote playback by event search; Fig 4 is remote playback by file search. Only a part of devices have the latter 3 playback modes.

Settings Interface



This interface includes local configuration and remote configuration (only some devices support this function). You can configure the local software or remotely set the device.

Information Interface



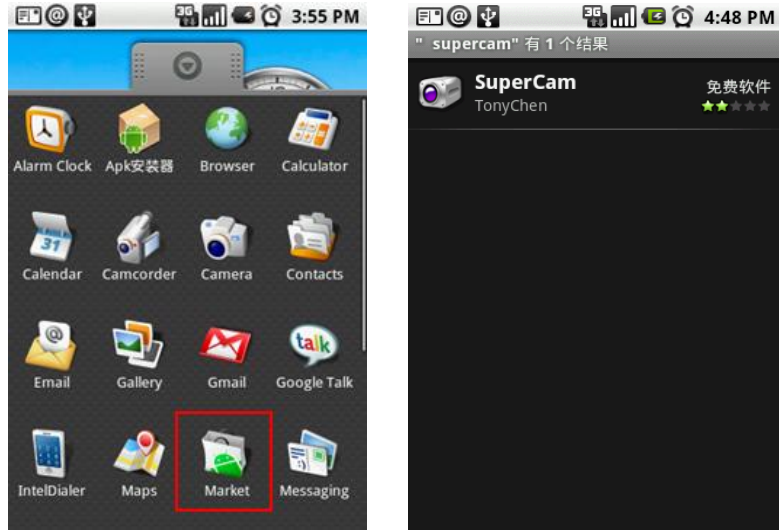
In this interface, you can view system information, network information and online user information.

1.3 By Phones with Android OS

Installation Instruction

Step 1: Run Google Market program.

Step 2: Search “Supercam”.



Step 3: Press “Install” button.

Step 4: Click “OK” button.



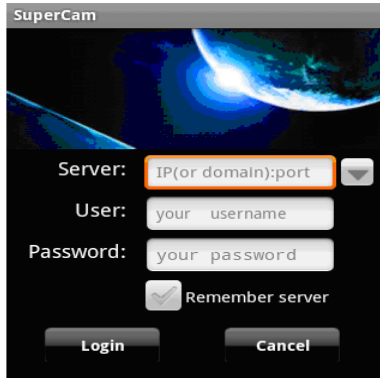
Step 5: You can view the download and install process in notifications. Once the download is done, the software will install automatically.



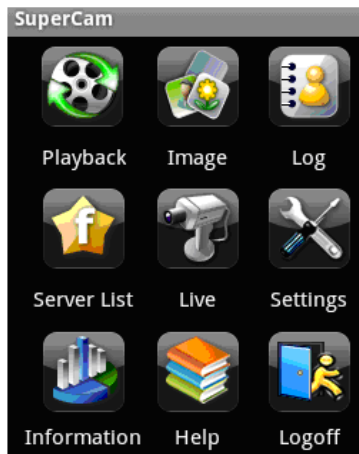
Login

Enter into server’s IP address (or domain name), user’s ID and password.

Click “Remember server” to save the setting; click ▼ button can quick input saved server address, user name and password.



Main Menu



Playback	playback record file
Image	image view
Log	log record
Server List	device list
Live	live view
Settings	software setting
Information	device information view
Help	software help center
Logoff	logoff and return to login interface

Live View



	Stop playing		Single channel display
	Screen mode		Four channels display
	Snap		PTZ
	Talk		Record
	Live audio		Hide

Image View



	The first picture		Zoom in
	The previous picture		Zoom out
	Next picture		Delete
	The last picture		

Record Playback



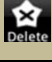


	Pause/Play
	Stop
	Forward
	Backward

Click Playback icon in the Main Menu interface to enter into the playback interface. First, choose channel. Second, select the record file and click it to playback. Finally, click 'Return' button to return to the previous interface.

Server list



	Add a server list
	Modify a server list
	Delete a server list
Return	Return to the previous interface

Config interface



Alarm setting: If Audio alarm is enabled, when Video Loss/Sensor/Motion happen, sound alarm will be triggered; If shake Alarm is enabled, when Video Loss/Sensor/Motion happen, shake alarm will be triggered.

Storage setting: User can setup the relevant parameters of mobile video. This function can be valid only insert SD card.

Display : User can setup display order or display mode.

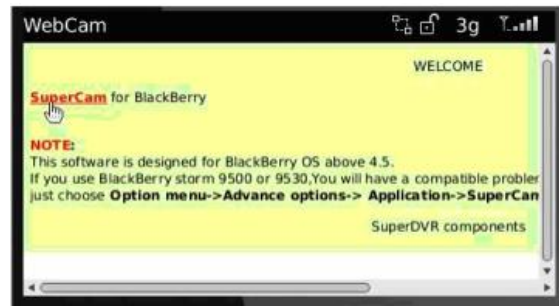
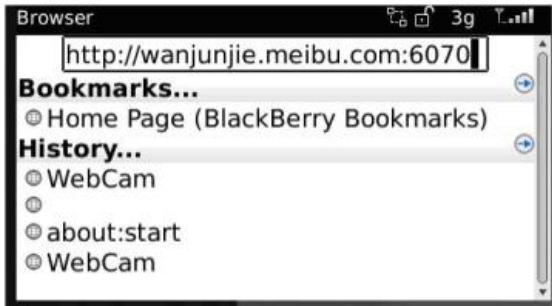
Information view



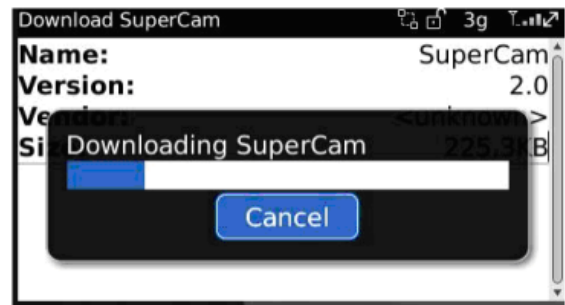
1.4 By Phones with Blackberry OS

Step 1: Open the browser of BlackBerry phone and enter server address.

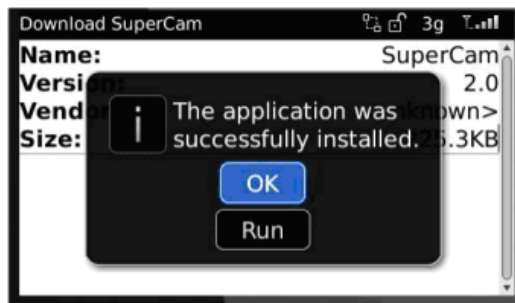
Step 2: Click “Supercam” to link.



Step 3: Click “Download” button on the popup interface.



Step 4. After the download is done, the software will be installed automatically.

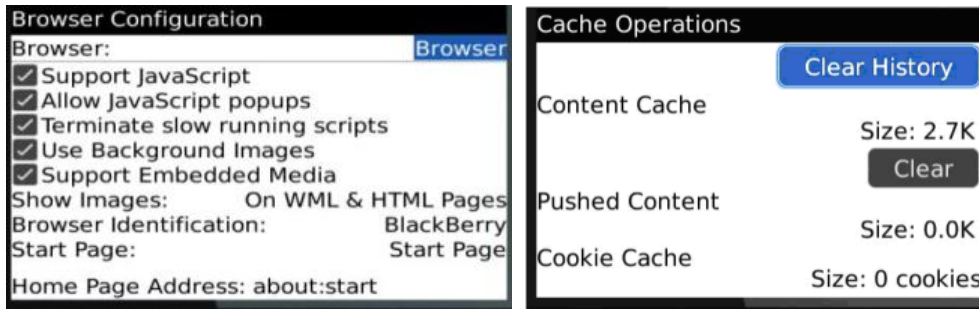


If the software fails to download, please check in accordance with the following steps:

1. Check whether the network of mobile phone is normal or not.
2. Check whether DVR server connect network normally or not.
3. Modify the option of Browser Configuration.

(1) Enter into Menu->Option->Browser Configuration. Refer to the following figure on the left.

(2) Enter into Menu->Option->Cache Operations. Clear up browser cache. Refer to the below picture on the right.



Note: When user used the Supercam software in mobile phone with touch screen, there will be compatible problem.

Solution: Enter into Options Menu->Advance options->Applications->Supercam and click “Disable Compatibility” button. This problem will be solved.

Login

Step 1: Enter server’s IP address (or domain name), user name and password.

Step 2: Click “Login” button.

Click “Remember server” to save the setting; click ▼ button can quick input saved server address, user name and password.



1. Main Menu















Image	Image view
Log	Log record
Server List	Device list
Live	Live view
Settings	Software setting
Information	Device information view
Help	Software help center
Logoff	Logoff and return to login interface

2. View Live



Note: User can click  Return button on the Blackberry phone to return the previous interface.

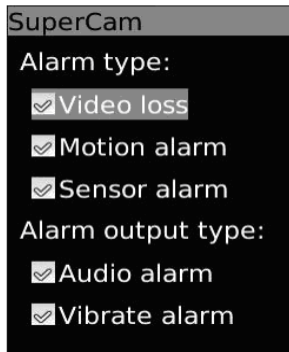
Mark 1	Current viewing channel	Mark 2	Channel status
	Switch channels		PTZ, click to switch to Fig 2 interface
	Snap		Full screen
	Background alarm		Stop rotating the PTZ
	Upward rotates the PTZ		Downward rotates the PTZ
	Leftward rotates the PTZ		Rightward rotates the PTZ
	Zoom In/Focus In/Iris Add		Zoom Out/Focus Out/Iris Sub
Preset	Select the preset point	Group	Set the cruise line

Server list



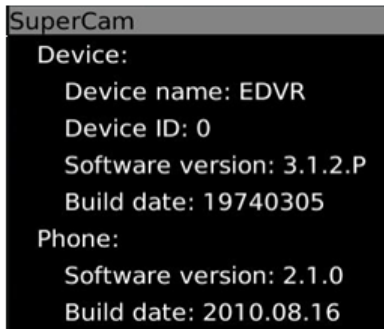
- [Add]** Add a server list
- [Modify]** Modify a server list
- [Delete]** Delete a server list

Software configuration



- Alarm type:** Setup the type of background alarm (Video Loss/Sensor/Motion)
- Alarm output type:** Setup prompt type of background Alarm (sound alarm/ bibrate alarm)

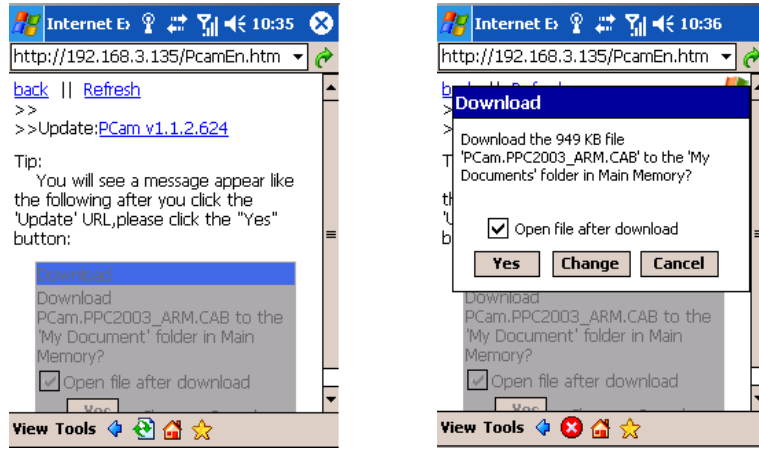
Information View



- Device ID:** the current connection device ID
- Software version:** the current connection device software version
- Build date:** the current connection device build date
- Software version:** the software version of mobile phone in use
- Software build date:** the software build date of mobile phone in use

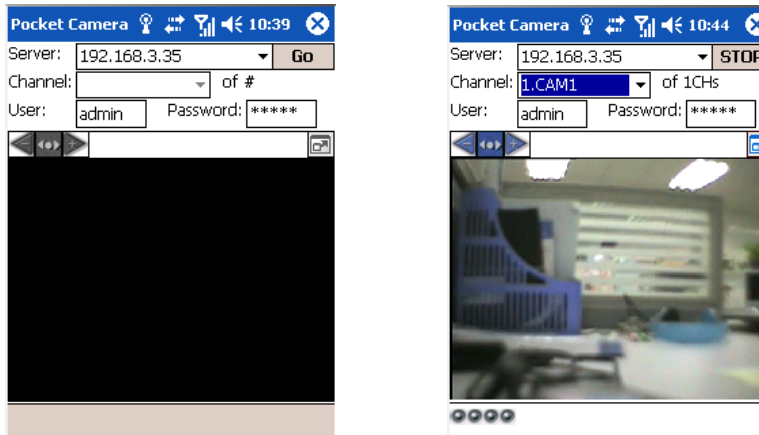
1.5 By Phones With Windows Mobile OS

- Step 1:** Activate the network access on mobile phone.
- Step 2:** Run “Internet Explorer” and input the server’s address. The connection is built up shown as below picture on the left.
- Step 3:** Click on the software name. A dialog box pops up as below picture on the right.
- Step 4:** Click “Yes” to start downloading and installing.



Step 5: PCam will be opened automatically after installation. Refer to the picture on the left.

Step 6: Input the server's address, ID and password respectively and click "Go" to log on the server. Refer to the below picture on the right:



Step 7: Camera 1 is the default channel after login. Change the channel in rolling-down menu of "Channel". Refer to the below picture on the right.



Notice: User name and password here are the same with that used on the DVR. The default is admin and 123456.
