

# **Quick Start Guide**

## **4/8/16-CH DVR**



## 1. Install Hard Drive

**Notice:** 1. Support one SATA hard drive. Please use the hard drive the manufacturers recommend specially for security and safe field.

2. Please disconnect the power before being connected to other devices. Don't hot plug in/out

**Step 1:** Unscrew and Open the top cover to connect the power and data cables. Place the HDD onto the bottom case as Fig 1-1.

**Step 2:** Screw the HDD as Fig 1-2.



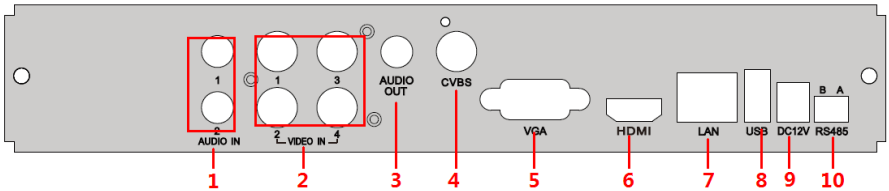
Fig 1-1 Connect HDD



Fig 1-2 Screw HDD

**Notice:** 1. For the convenience to install, please connect the power and data cables firstly, and then screw to fix.

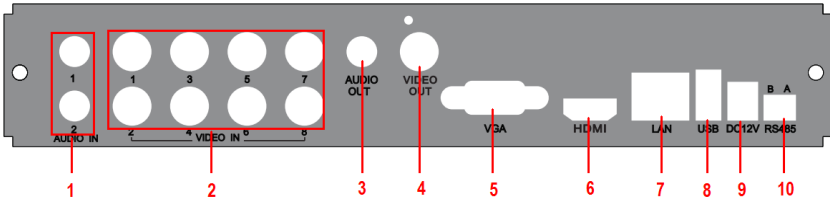
## 2. Rear Panel Instruction



Rear Panel for 4-ch

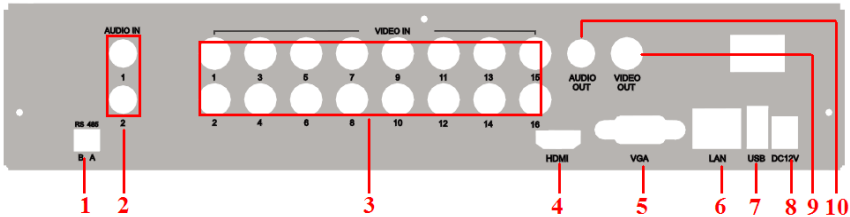
| Item | Name      | Description  |
|------|-----------|--|
| 1    | Audio In  | 1-ch audio input   |
| 2    | Video In  | 4-ch video inputs  |
| 3    | Audio Out | Audio output, connect to the sound box   |
| 4    | CVBS Port | CVBS video signal output   |
| 5    | VGA Port  | VGA output; connect to monitor   |
| 6    | HDMI Port | Connect to high-definition display device  |
| 7    | LAN       | Network port   |
| 8    | USB Port  | To connect external USB devices like USB flash, USB HDD for backup or update firmware; or connect to USB mouse |
| 9    | DC 12V    | Power input  |
| 10   | RS485     | Connect to speed dome or keyboard. A is TX+; B is TX-  |

## 4/8/16-CH DVR Quick Start Guide



**Rear Panel for 8-ch**

| Item | Name      | Description  |
|------|-----------|--|
| 1    | Audio in  | 2-CH Audio inputs                                      |
| 2    | Video in  | Video input channels from 1-8                          |
| 3    | Audio out | Audio output, connect to the sound box                 |
| 4    | Video out | Connect to monitor                                     |
| 5    | VGA port  | VGA output, connect to monitor                         |
| 6    | HDMI port | Connect to high-definition display device              |
| 7    | LAN       | Network port   |
| 8    | USB port  | Connect USB mouse or connect external USB devices      |
| 9    | DC12V     | POWER INPUT  |
| 10   | RS485     | Connect to speed dome or keyboard (A is TX+, B is TX-) |



**Rear Panel for 16-ch**

| Item | Name      | Description  |
|------|-----------|--|
| 1    | RS485     | Connect to speed dome or keyboard (A is TX+, B is TX-) |
| 2    | Audio in  | 2-CH Audio inputs                                      |
| 3    | Video in  | Video input channels from 1-16                         |
| 4    | HDMI port | Connect to high-definition display device              |
| 5    | VGA port  | VGA output, connect to monitor                         |
| 6    | LAN       | Network port   |
| 7    | USB port  | Connect USB mouse or connect external USB devices      |
| 8    | DC12V     | POWER INPUT  |
| 9    | Video out | Connect to monitor                                     |
| 10   | Audio out | Audio output, connect to the sound box                 |

## 3. Startup & Shutdown

### 3.1 Startup

**Step1:** Connect to cameras and monitor.

**Step2:** Connect with the source power.

**Step3:** The device will boot and the power indicator will display blue.

**Step4:** A WIZZARD window will pop up.

### 3.2 Shutdown


You can shut down the device by using IR remote controller and mouse.

#### By IR remote controller:

Step1: Press Power button. This will bring up a shutdown window. The unit will shut down by clicking “OK” button.

Step2: Disconnect the power.

#### By mouse:

Step1: Enter into  Menu and select “Shut Down” icon. This will take you to a shutdown window.

Step2: Click OK. Then the unit will power off after a while.

Step3: Disconnect the power.

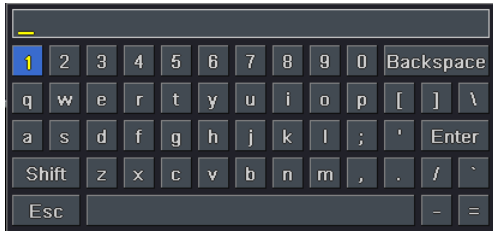
## 4. Setup Wizard

- After the device starts, a setup wizard pops up. You can set up time, network, record and disk management.



| WIZARD  |                                     |
|---|-------------------------------------|
| Device Name   | EDVR                                |
| Language  | English                             |
| Date Format   | MM-DD-YY                            |
| Time Format   | 24 Hour                             |
| Time Zone   | GMT                                 |
| System Date   | 03 / 24 / 2012 25                   |
| System Time   | 16 : 40 : 49                        |
| Startup Wizard  | <input checked="" type="checkbox"/> |
| <input type="button" value="Prev"/> <input type="button" value="Next"/> <input type="button" value="Exit"/> |                                     |

Click Device name box to popup a keyboard as follows:



It supports digits, alphabets and symbols as inputs. Click Shift button to input Capital letters and symbols; click Shift button again to return.

- Click 'Next' button to bring up a network setup window.

**WIZARD**

|                                    |                                     |
|------------------------------------|-------------------------------------|
| HTTP Port                          | 80                                  |
| Server Port                        | 6036                                |
| Obtain an IP address automatically | <input checked="" type="checkbox"/> |
| IP Address                         | 192.168.011.061                     |
| Subnet Mask                        | 000.000.000.000                     |
| Gateway                            | 192.168.011.001                     |
| Preferred DNS Server               | 192.168.011.001                     |
| Alternate DNS Server               | 000.000.000.000                     |

The default HTTP port is 80. The default server port is 6036. You can check 'Obtain an IP address automatically' to acquire network information or input IP address, subnet mask, gateway, preferred/alternate DNS server manually. This function is used to monitor DVR through internet (See Section 10 for details).

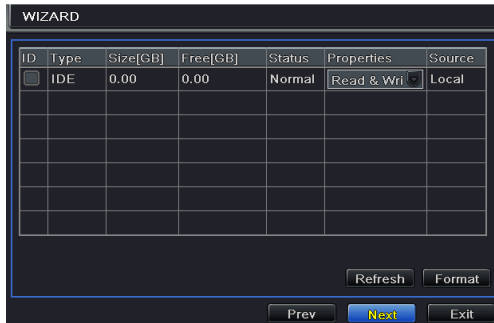
- Click 'Next' button. This will take you to record setup window.

**WIZARD**

| CH                                       | Resolutio | fps | Encode | Quality | Max Bitrate |
|--|-----------|-----|--------|---------|-------------|
| 1  | CIF       | 30  | CBR    | Higher  | 768 kbps    |
| 2  | D1        | 7   | CBR    | Higher  | 1536 kbps   |
| 3  | CIF       | 30  | CBR    | Higher  | 768 kbps    |
| 4  | CIF       | 30  | CBR    | Higher  | 768 kbps    |
| All Remaining : 2 (CIF), 1 (HD1) 0 (D1). |           |     |        |         |             |
|  | CIF       | 30  | CBR    | Higher  | 768 kbps    |

Select resolution, fps, encode, quality and max bitrate. The higher the value is, the clearer the recorded picture is. Of course, more space of HDD will be taken up.

- Click 'Next' button. This will take you to the HDD management window.



You can check your HDD information through this tab. If your HDD was recently installed, select the HDD from the list to format it.

- Click 'Next' button. This will let you see your DVR status. And then Click 'Finish' button to end this wizard.

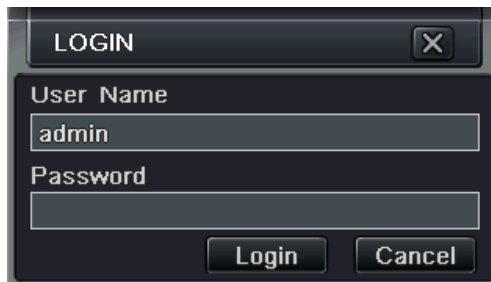
You can also refer to the complete setup steps from the relevant sections of DVR User Manual. If you don't want to setup Wizard, please click Exit button to exit.

## 5. Login

After you exit the wizard setup, you can login to the DVR.

**Notice:** This DVR can only display options on either VGA/HDMI monitor or CVBS monitor at a given point of time, if there is live image display without menu options, please check if there is display on other device/monitor, or long press Fn/ESC key to wait for login dialog box to appear. Long press Fn/ESC key can switch the output between CVBS and VGA/HDMI.

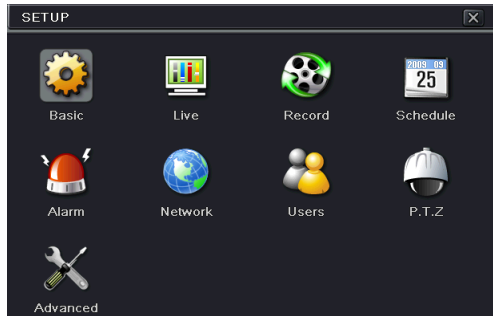
Press the MENU button which will bring the LOGIN dialogue box and enter the user name: admin and password: 123456



Login

## 6. Main Menu Setup

Click right mouse to enter into the main menu. Then click Setup to enter into Setup interface as shown in Fig 4-2.



**Basic configuration:** You can set video system, menu language, audio, time and authorization check.

**Live configuration:** You can set name/time display, picture color and hide cameras.

**Record configuration:** You can set record quality, frame rate, resolution, time stamp and recycle.

**Schedule configuration:** You can set schedule for timer and motion detection alarm respectively.

**Alarm configuration:** You can set motion, buzzer and video loss alarm.

**Network configuration:** You enable network function, and configure IP address, DDNS, transmission video parameters here.

**User configuration:** Administrator can add, delete users, and change their authorization

**PTZ configuration:** You can set protocol, baud rate, address, presets and auto cruise track here.

**Advanced configuration:** You can reboot the device and import & export data into or from mobile storage medium.

## 7. Recording Setup

A user needs to install and format a HDD, and set all the recording parameters before recording. There are three kinds of record modes.

### 7.1 Manual Recording

A user can press REC button on the front panel after quitting system setup. Press this button again to stop recording.

Or press REC button on remote controller. Click it again to stop.

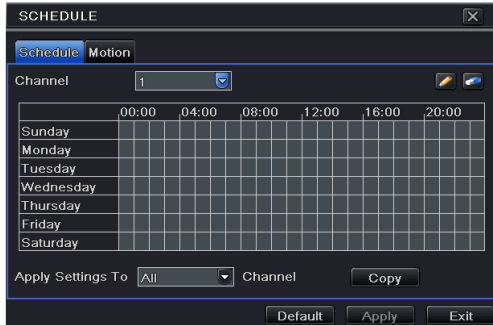
Or click REC button on the tool bar with mouse. Click it again to stop.



### 7.2 Schedule Recording



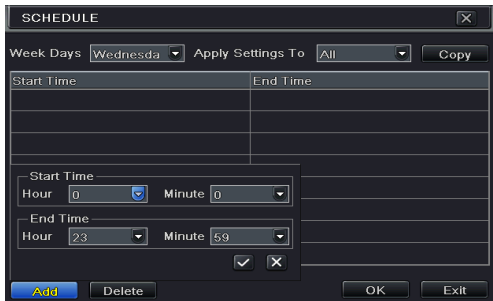
To Setup Schedule Recording:

Step1: Enter into Menu→Setup→Schedule tab. Refer to the following picture.



Step2: Click “” button to add a certain day schedule; click “” button to delete the selected schedule;

Step 3: You can also double-click the grid to pop up a week schedule window.



Select day and then click ‘Add’ button to setup the start time and end time. Then select other days and click ‘Copy’ button to save the setting to other days. Finally, click ‘OK’ button to save week schedule.

Step 4: Select other channels and set timeline for them or select ‘Apply Settings To All Channel and click “Copy” button to set the same settings for all channels.

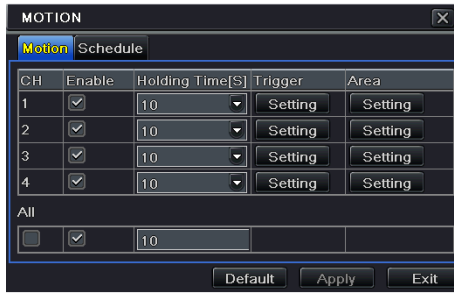
### 7.3 Motion Based Recording

Motion detection based recording: when there is a motion event detected, the camera will be triggered to record.

To Setup Motion Based Recording:

Step 1: Enter into Menu→Setup→Schedule→Motion tab. The setup steps for schedule for motion based recording are similar to normal schedule setup. You can refer to 7.2 Schedule Recording for details.

Step 2: Enter into Menu→Setup→Alarm→Motion→Motion tab as shown below.



Step3: Enable motion alarm (Please specify to channel) and click ‘Apply’ to save settings.

Step4: Click ‘Setting’ button under the Area to set Sensitivity and Detection area. Left click the grid and drag to delete the area. Drag again to add area. You can drag slide bar to set the sensitivity value (1-8). The higher the value is the more sensitive it is to motion. Since the sensitivity is influenced by color and time (day or night), you can adjust its value according to the practical conditions. Click icon to set the whole area as detection area. Click icon to clear the set detection area. Click icon to test the sensitivity as per the local conditions. Once motion is sensed, it displays a figure icon. Click icon to save the setting. Click icon to exit the current interface.




Step 5: Enter into Menu→Setup→Alarm→Motion→Schedule tab to bring up schedule settings for motion alarm. The setup steps are similar to normal schedule setup. You can refer to 7.2 Schedule Recording for details.

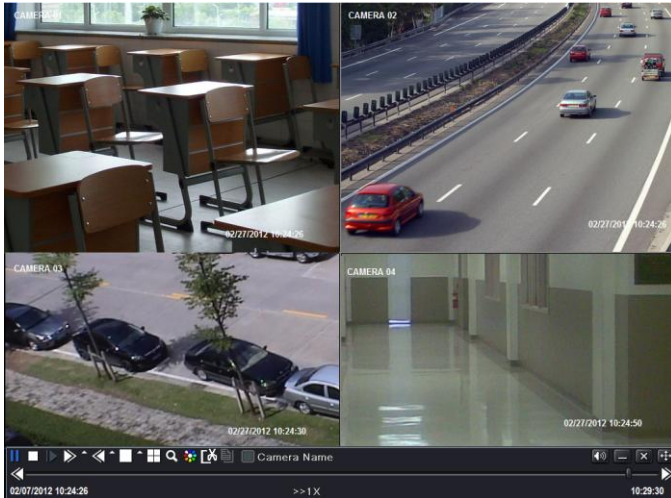
**Note:** The timelines of the two schedules must match, otherwise you cannot get the record in some time.

## 8. Playback

This unit supports four kinds of playback

### 8.1 Live Playback

Click Play  button on the main menu bar to playback the record. User can do concrete operation by clicking the buttons on screen.




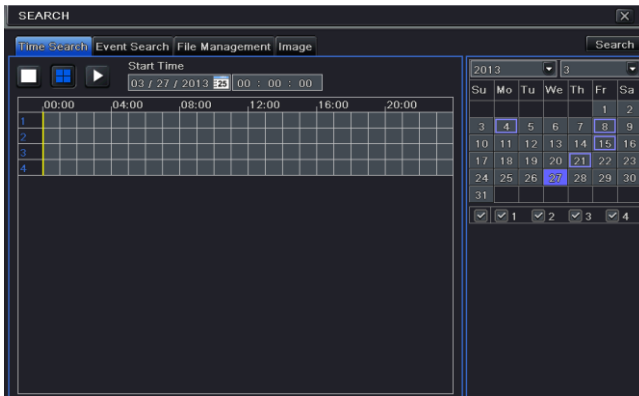
## 8.2 Playback by Time Search

Step 1: Enter into Menu→Search→Time Search tab.

Step 2: Select date and channels on the right hand side and press “Search” button. A date with highlighted borderline indicates presence of data.

Step 3: Set the start time by clicking a particular grid or by entering the specific value in the start time field.

Step 4: Select the channel display mode and click  button to play record. Use the playback toolbar to control the playback.



### 8.3 Playback by Event Search

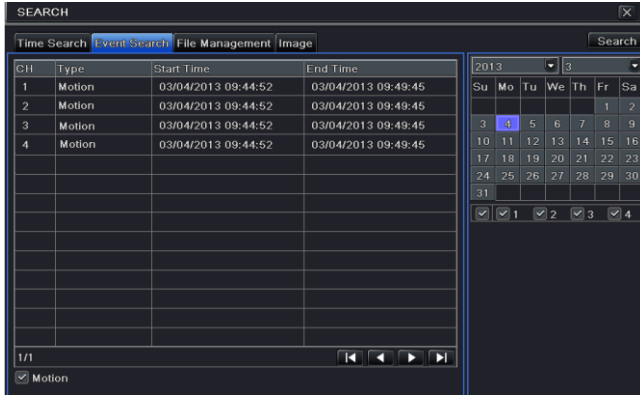
Step 1: Enter into Menu→Search→Event Search tab.

Step 2: Select date and channels on the right hand side. A data with highlighted borderline indicates presence of data.

Step 3: Then checkmark Motion. You can search for motion based recording.

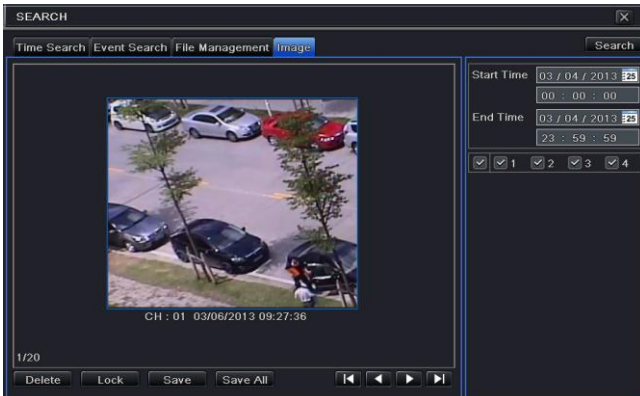
Step 4: Press “Search” button to display the searched event information in the event list box.

Step 5: Double click the event item to play the record.



### 8.4 Playback by Image Search

Step 1: Enter into Menu→Search→Image tab.

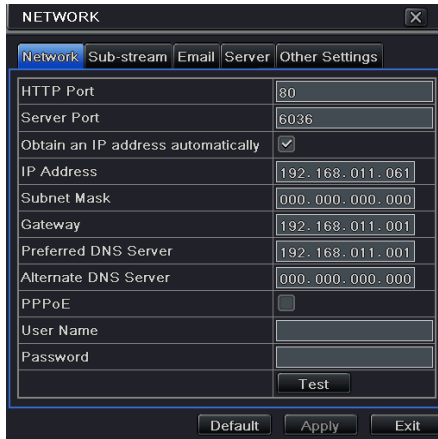


Step 2: Select data and channels on the right hand side.

Step 3: Press “Search” button to search for a recorded image.

Step 4: Once an alarm image has been identified, the user can double click the image to play the recording.





- Input IP address, Subnet, Gateway. If using DHCP, please enable DHCP in both the DVR and the router. Enter into Menu → Information → Network, and user can check the network settings of the DVR.
- Enter into Record Setup to set network video parameters like resolution, frame rate etc.
- Open IE on a computer on the same network. Input the IP address of the DVR in IE address bar and press enter. If HTTP port is not 80, add the port number after IP address.
- IE will download ActiveX component automatically. Enter the username and password in the subsequent window

## 10.2 Access DVR on WAN

### 1. Connect the DVR to internet through router or virtual server

- Please enter into Menu → Setup → Network Setup as shown above.
- Input IP address, Subnet, Gateway. If using DHCP, please enable DHCP in both the DVR and the router.
- Forward IP address and port number in Virtual Server setup of the router or virtual server. Configure the firewall to allow accessing the DVR. (If the user has enabled the UPnP function in both the DVR and router, he can skip this step. Please refer to the relevant chapter for more details.)
- Open IE browser, input IP address, or dynamic domain name and enter. If HTTP port is not 80, add the port number after IP address or domain name.
- IE will download ActiveX automatically. Then a window pops up and asks for user name and password. Input name and password correctly, and enter to view.

### 2. Connect the DVR to Internet through PPPoE

- Enter into the DVR's Main Menu→Setup→Network interface to enable PPPoE and then input user name and password received from your ISP. Next, click 'Apply'. The DVR will connect to the server and would give a confirmation message.
- If you want to utilize dynamic domain name, please apply for a domain name in a DNS server supported by the DVR or router. Then add to the DVR or router.
- When accessing the remote interface of DVR, user can input WAN IP/domain name to access directly (user can enter into Main menu→Information→Network interface to check IP address). The browser will download Active X control
- The following steps are the same as the connection way above.